

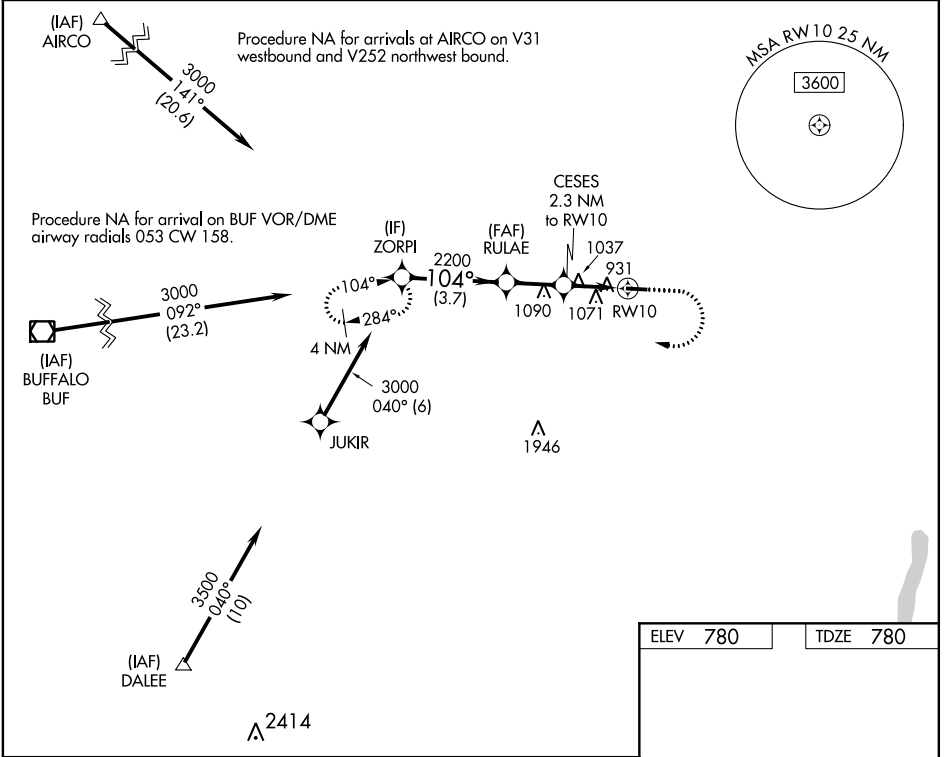
WAAS CH 61030 W10A	APP CRS 104°	Rwy Idg TDZE Apt Elev	3854 780 780
--	------------------------	-----------------------------	---

RNAV (GPS) RWY 10

LE ROY (5G~~0~~)

RNP APCH.	MISSED APPROACH: Climb to 1500 then climbing right turn to 3000 direct ZORPI and hold.
<p>Procedure NA at night. Rwy 10 helicopter visibility reduction below 1 SM NA. Procedure NA for arrivals at AIRCO on V31 westbound and V252 northwest bound.</p>	

ROC ASOS 124.825	ROCHESTER APP CON 123.7 322.3	UNICOM 122.8 (CTAF) 0
----------------------------	---	---------------------------------



NE-2, 09 SEP 2021 to 07 OCT 2021

NE-2, 09 SEP 2021 to 07 OCT 2021

ELEV 780		TDZE 780																
<p>ZORPI</p> <p>3000</p> <p>104°</p> <p>RULAE</p> <p>CESES 2.3 NM to RW10</p> <p>3.00 TCH 31</p> <p>2200</p> <p>1540</p> <p>RW10</p>	<p>1500</p> <p>3000</p> <p>ZORPI</p>	<p>104° to RW10</p> <p>3854 X 60</p> <p>28</p>																
<p>3.7 NM</p> <p>2.1 NM</p> <p>2.3 NM</p>	<table border="1"> <tr> <td>CATEGORY</td> <td>A</td> <td>B</td> <td>C</td> <td>D</td> </tr> <tr> <td>LP MDA</td> <td>1360-1</td> <td>580 (600-1)</td> <td colspan="2">NA</td> </tr> <tr> <td>LNAV MDA</td> <td>1400-1</td> <td>620 (700-1)</td> <td colspan="2">NA</td> </tr> </table>			CATEGORY	A	B	C	D	LP MDA	1360-1	580 (600-1)	NA		LNAV MDA	1400-1	620 (700-1)	NA	
CATEGORY	A	B	C	D														
LP MDA	1360-1	580 (600-1)	NA															
LNAV MDA	1400-1	620 (700-1)	NA															
<p>MIRL Rwy 10-28 0</p> <p>REIL Rwy 10 and 28 0</p>																		