

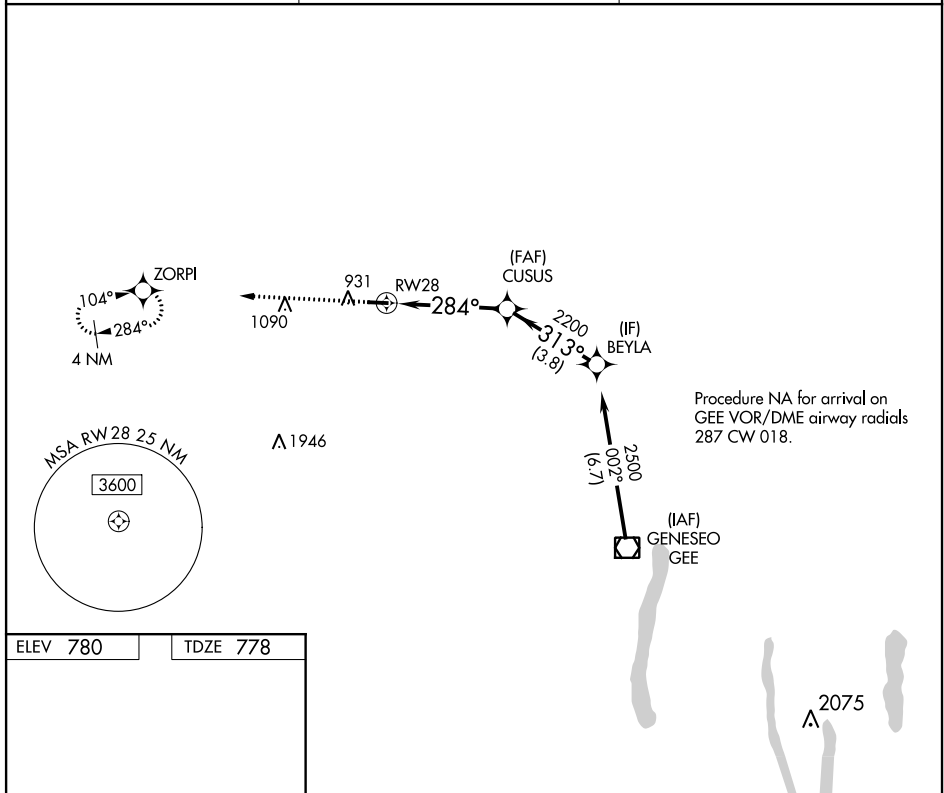
WAAS CH 69330 W28A	APP CRS 284°	Rwy Idg TDZE 778 Apt Elev 780	3854 778 780
--	------------------------	---	---

RNAV (GPS) RWY 28

LE ROY (5G0)

RNP APCH.	Procedure NA at night. Rwy 28 helicopter visibility reduction below 1 SM NA. Use Greater Rochester altimeter setting.	MISSED APPROACH: Climb to 3000 direct ZORPI and hold.
Procedure NA at night. Rwy 28 helicopter visibility reduction below 1 SM NA. Use Greater Rochester altimeter setting.		

ROC ASOS 124.825	ROCHESTER APP CON 123.7 322.3	UNICOM 122.8 (CTAF) 1
----------------------------	---	--



ELEV 780	TDZE 778	Visual Segment - Obstacles.			
3854 X 60 10 82 284° to RW28		3000	ZORPI	BEYLA	
RW28		2200	CUSUS	2500	
		4.3 NM		3.8 NM	
CATEGORY	A	B	C	D	
LP MDA	1 240-1	462 (500-1)	NA		
LNAV MDA	1 240-1	462 (500-1)	NA		

NE-2, 09 SEP 2021 to 07 OCT 2021

NE-2, 09 SEP 2021 to 07 OCT 2021