

|  |                        |   |
|--|------------------------|---|
| WAAS<br>CH <b>57932</b><br><b>W18A</b> | APP CRS<br><b>181°</b> | Rwy Idg <b>3999</b><br>TDZE <b>400</b><br>Apt Elev <b>400</b> |
|--|------------------------|---|

**RNAV (GPS) RWY 18**  
PINCKNEYVILLE-DU QUOIN (PJY)

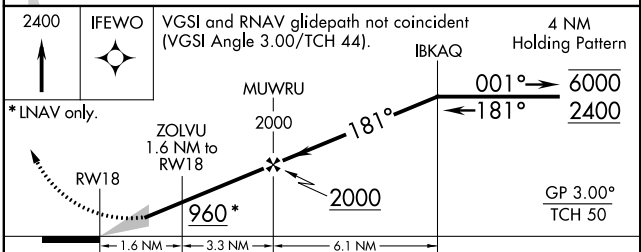
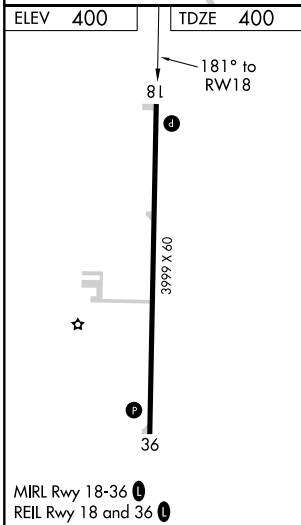
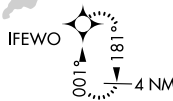
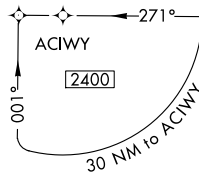
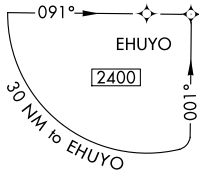
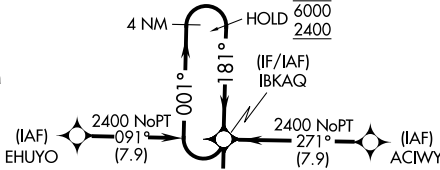
RNP APCH.

**NA** Baro-VNAV NA. Use Carbondale-Murphysboro altimeter setting.

MISSED APPROACH:  
Climb to 2400 direct  
IFEWO and hold.

KANSAS CITY CENTER  
**127.475 346.275**

UNICOM  
**122.8 (CTAF) 0**



| CATEGORY     | A                   | B | C                   | D                    |
|--------------|---------------------|---|---------------------|----------------------|
| LPV DA       | 682-1 282 (300-1)   |   |                     |                      |
| LNAV/VNAV DA | 808-1½ 408 (500-1½) |   |                     |                      |
| LNAV MDA     | 900-1 500 (500-1)   |   | 900-1¾ 500 (500-1¾) |                      |
| CIRCLING     | 960-1 560 (600-1)   |   | 960-1½ 560 (600-1½) | 1080-2¼ 680 (700-2¼) |

EC-3, 09 SEP 2021 to 07 OCT 2021

EC-3, 09 SEP 2021 to 07 OCT 2021