

WAAS CH <b>61018</b> <b>W29A</b>	APP CRS <b>287°</b>	Rwy Idg TDZE Apt Elev	<b>6534</b> <b>4933</b> <b>4933</b>
--	------------------------	-----------------------------	---

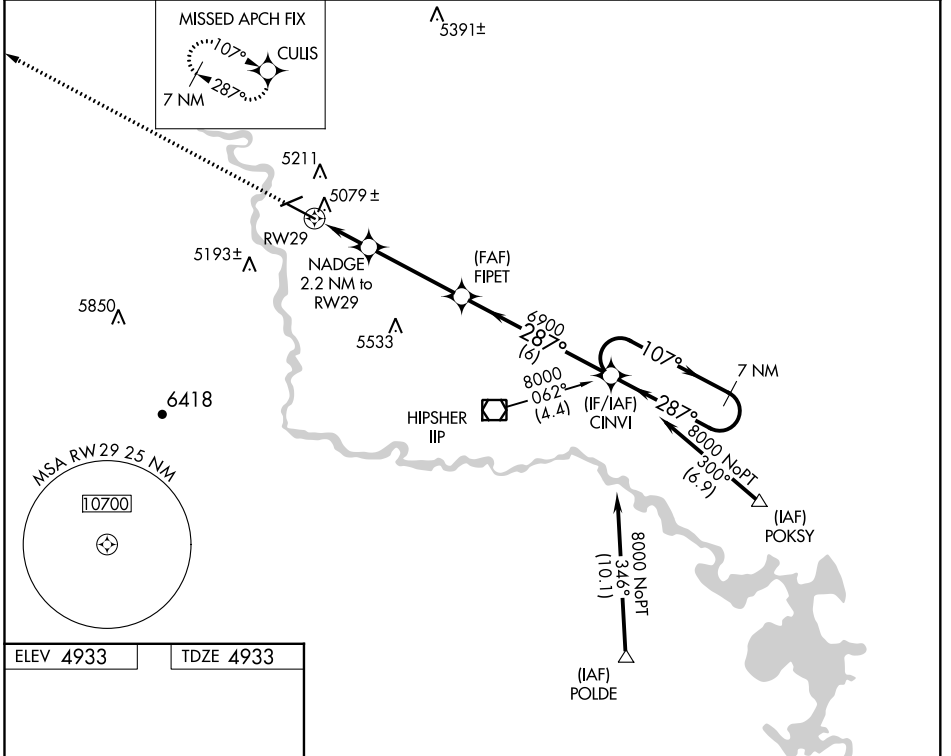
# RNAV (GPS) RWY 29

CONVERSE COUNTY (DGW)

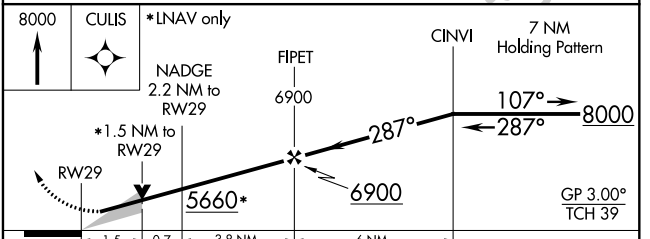
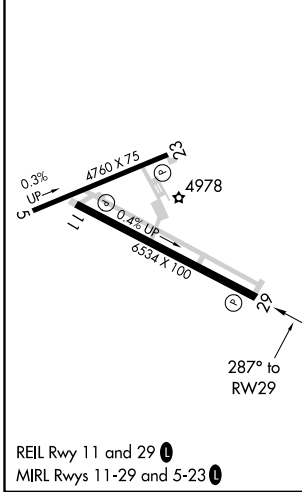
For uncompensated Baro-VNAV systems, LNAV/VNAV NA below -24°C (-11°F) or above 39°C (102°F).  
DME/DME RNP-0.3 NA.

MISSED APPROACH: Climb to 8000 direct CULIS and hold.

ASOS <b>135.225</b>	DENVER CENTER <b>135.6 363.025</b>	UNICOM <b>122.8 (CTAF) 0</b>
------------------------	---------------------------------------	---------------------------------



ELEV 4933	TDZE 4933
-----------	-----------



	A	B	C	D
CATEGORY				
LPV DA		5133-3/4	200 (200-3/4)	
LNAV/VNAV DA		5369-1 1/2	436 (500-1 1/2)	
LNAV MDA	5440-1	507 (600-1)	5440-1 1/2	507 (600-1 1/2)
CIRCLING	5520-1	587 (600-1)	5520-1 1/2 587 (600-1 1/2)	5560-2 627 (700-2)

NW-1, 09 SEP 2021 to 07 OCT 2021

NW-1, 09 SEP 2021 to 07 OCT 2021