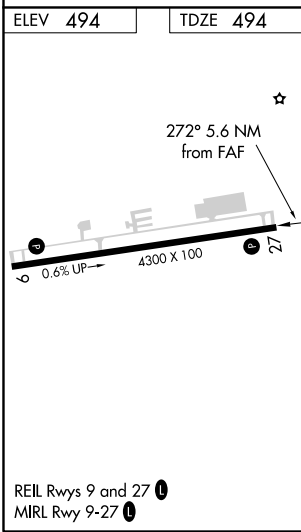
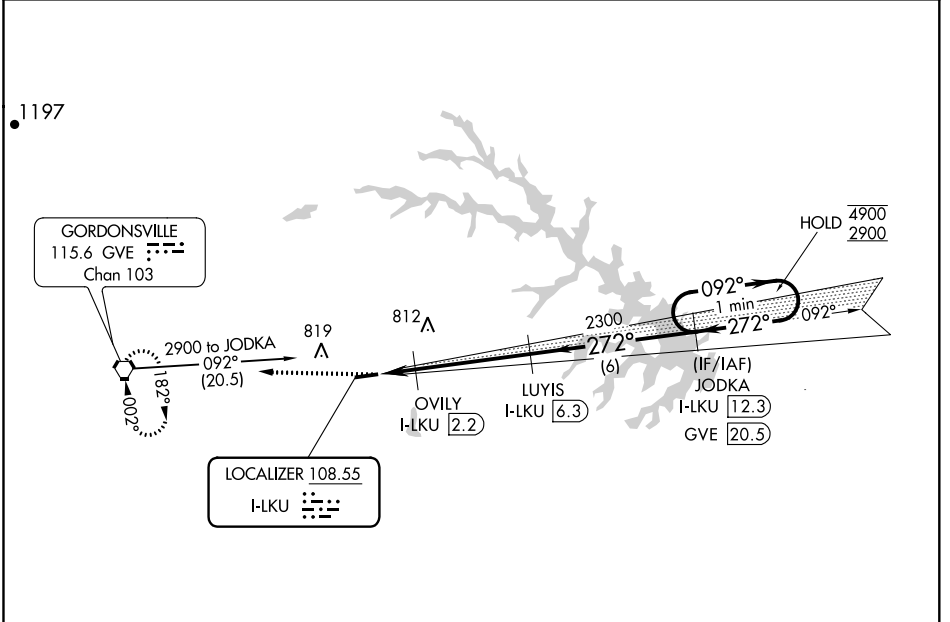


LOC I-LKU <b>108.55</b>	APP CRS <b>272°</b>	Rwy Idg TDZE Apt Elev	<b>4300</b> <b>494</b> <b>494</b>
----------------------------	------------------------	-----------------------------	---

# LOC RWY 27

LOUISA COUNTY/FREEMAN FIELD (LKU)

DME required.		MISSED APPROACH: Climb to 2900 direct GVE VORTAC and hold.
AWOS-3 <b>119.475</b>	POTOMAC APP CON <b>132.85 323.125</b>	UNICOM <b>122.975 (CTAF) 0</b>



CATEGORY	A	B	C	D
	820-1	326 (400-1)		NA
S-LOC 27				NA
CIRCLING	900-1 406 (500-1)	960-1 466 (500-1)		NA

NE-3, 09 SEP 2021 to 07 OCT 2021

NE-3, 09 SEP 2021 to 07 OCT 2021