

WAAS CH 48843 W09A	APP CRS 092°	Rwy Idg 4300 TDZE 489 Apt Elev 494
--	------------------------	---

RNAV (GPS) RWY 9

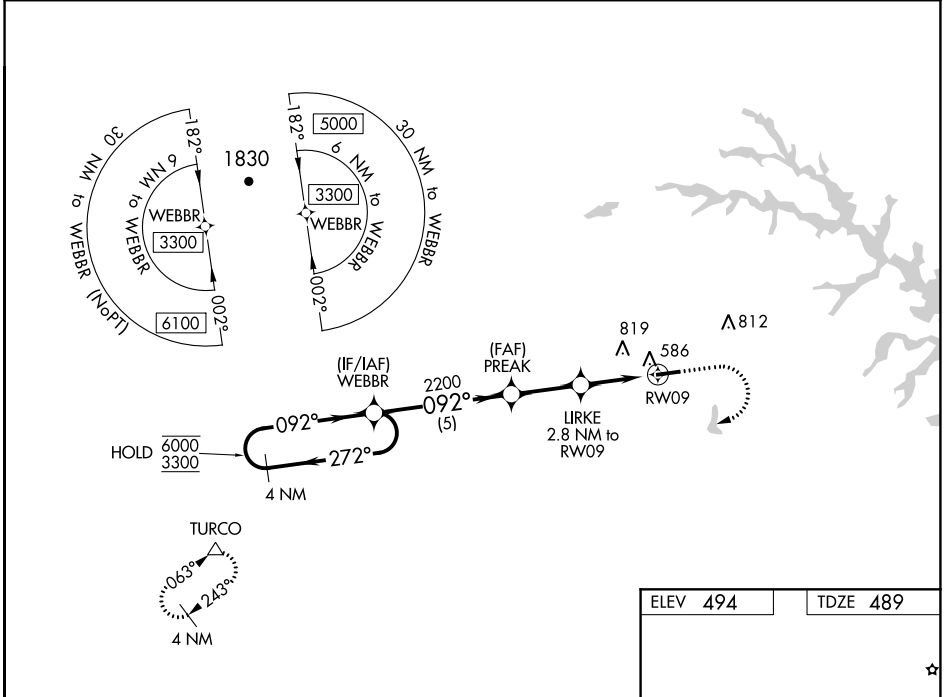
LOUISA COUNTY/FREEMAN FIELD (LKU)

RNP APCH.

▼ Circling NA north of Rwy 9-27. Rwy 9 helicopter visibility reduction below 3/4 SM NA.
 ▲ For uncompensated Baro-VNAV systems, LNAV/VNAV NA below -15°C or above 54° C. When local altimeter setting not received, use Orange altimeter setting and increase LPV DA to 775 feet, LNAV/VNAV DA to 784 feet and MDA 40 feet; increase LPV and LNAV/VNAV visibility 1/2 SM. Baro-VNAV and VDP NA when using Orange altimeter setting.

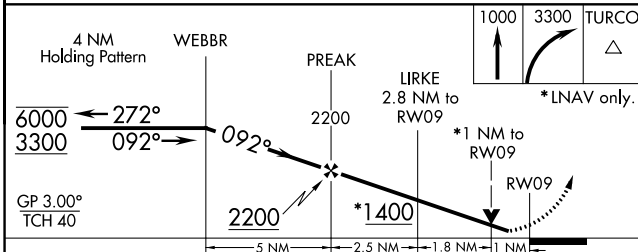
MISSED APPROACH: Climb to 1000 then climbing right turn to 3300 direct TURCO and hold.

AWOS-3 119.475	POTOMAC APP CON 132.85 323.125	UNICOM 122.975 (CTAF) 1
--------------------------	--	--



NE-3, 09 SEP 2021 to 07 OCT 2021

NE-3, 09 SEP 2021 to 07 OCT 2021



CATEGORY	A	B	C	D
LPV DA	739-3/4	250 (300-3/4)		NA
LNAV/VNAV DA	748-3/4	259 (300-3/4)		NA
LNAV MDA	840-1	351 (400-1)		NA
CIRCLING	900-1	960-1		
	406 (500-1)	466 (500-1)		

ELEV 494	TDZE 489
----------	----------

REIL Rwy 9 and 27 **1**
MIRL Rwy 9-27 **1**