

WAAS CH 82005 W16A	APP CRS 163°	Rwy Idg TDZE 1515 Apt Elev 1535
--	------------------------	---

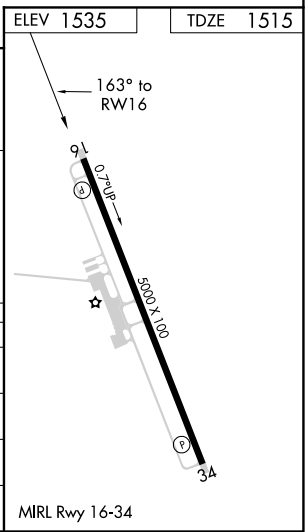
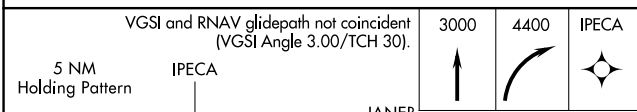
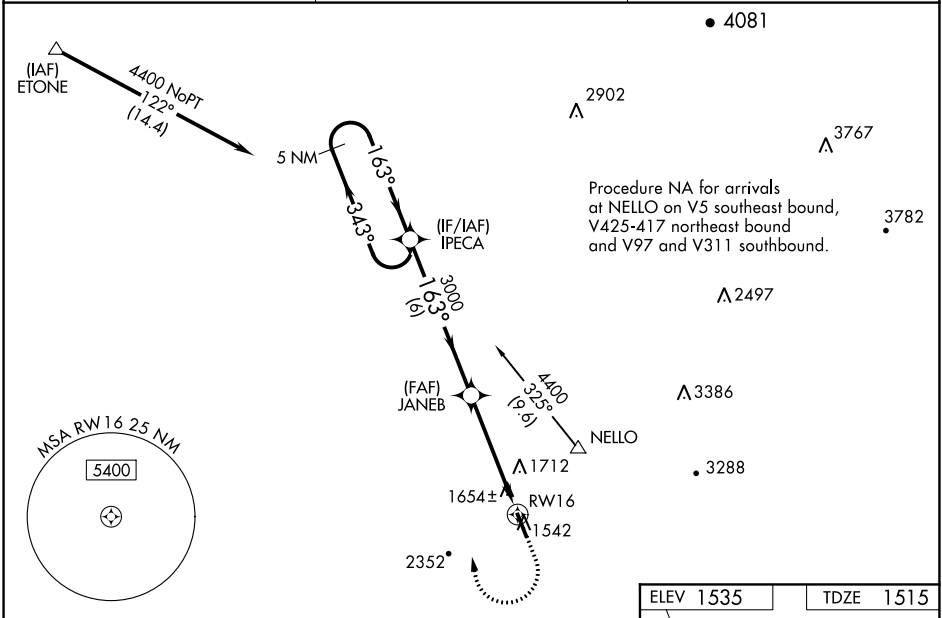
RNAV (GPS) RWY 16

PICKENS COUNTY (JZP)

NA Baro-VNAV NA when using Canton altimeter setting. For uncompensated Baro-VNAV systems, LNAV/VNAV NA below -18°C (0°F) or above 54°C (130°F). DME/DME RNP-0.3 NA. Helicopter visibility reduction below 3/4 SM NA. When local altimeter setting not received, use Canton altimeter setting and increase LPV DA to 1976 LNAV/VNAV DA to 1889 and all MDA 80 feet, increase LPV all Cats visibility to 1%, LNAV/VNAV all Cats visibility to 1%, LNAV Cat C visibility to 1% and Circling Cat C visibility to 2%.

MISSED APPROACH:
Climb to 3000 then climbing right turn to 4400 direct IPECA and hold.

AWOS-3PT 118.55	ATLANTA CENTER 133.1 342.425	UNICOM 122.725 (CTAF)
---------------------------	--	---------------------------------



5 NM Holding Pattern	IPECA	JANE B	RWY 16
4400 ← 343°	← 163° →	163°	
GP 3.00° TCH 40		3000	
	6 NM	4.6 NM	

CATEGORY	A	B	C	D
LPV DA	1925-1 3/8 410 (400-1%)			NA
LNAV/VNAV DA	1838-1 1/8 323 (400-1%)			NA
LNAV MDA	1980-1	465 (500-1)	1980-1 3/8 465 (500-1%)	NA
CIRCLING	1980-1 445 (500-1)	2160-1 625 (700-1)	2360-2 1/2 825 (900-2 1/2)	NA

SE-4, 09 SEP 2021 to 07 OCT 2021

SE-4, 09 SEP 2021 to 07 OCT 2021