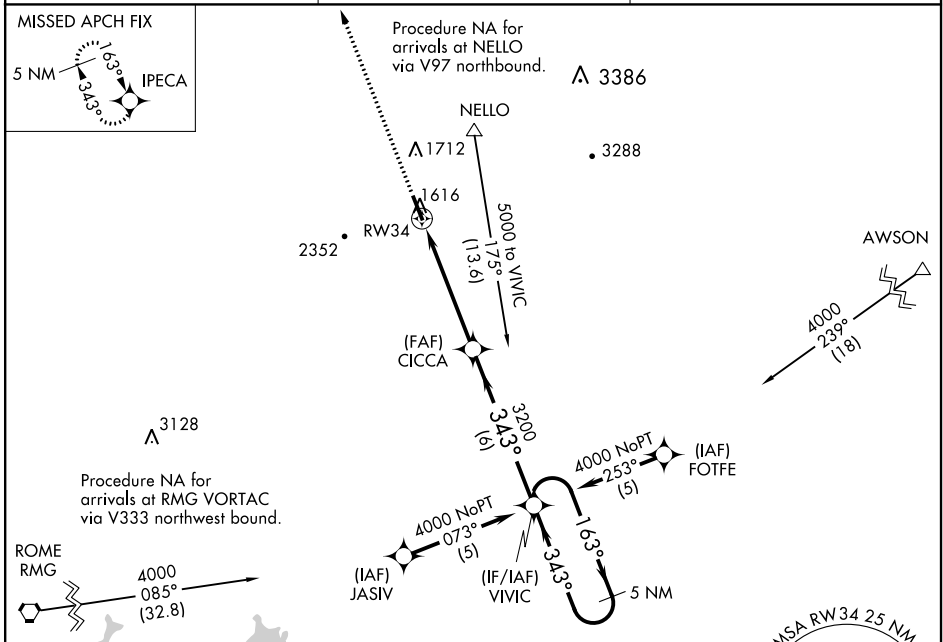


WAAS CH <b>77705</b> <b>W34A</b>	APP CRS <b>343°</b>	Rwy Idg TDZE <b>1535</b> Apt Elev <b>1535</b>
--	------------------------	---

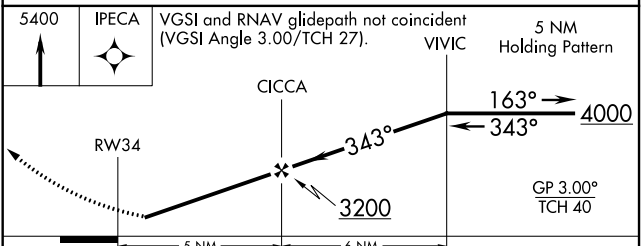
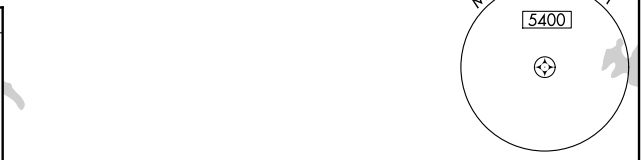
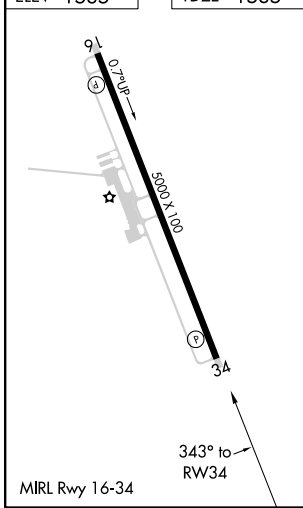
# RNAV (GPS) RWY 34

PICKENS COUNTY (JZP)

<p><b>NA</b> DME/DME RNP-0.3 NA. Visibility reduction by helicopters NA. If local altimeter setting not received, use Cobb County Intl-McCollum Fld altimeter setting and increase all LPV DAs to 1922/MDAs 140 feet.</p>	<p>MISSED APPROACH: Climb to 5400 direct IPECA and hold, continue climb-in-hold to 5400.</p>	
<p>AWOS-3PT <b>118.55</b></p>	<p>ATLANTA CENTER <b>133.1 342.425</b></p>	<p>UNICOM <b>122.725 (CTAF)</b></p>



ELEV 1535	TDZE 1535
-----------	-----------



CATEGORY	A	B	C	D
LPV DA		1789-1 254 (300-1)		NA
LNAV MDA		1880-1 345 (400-1)		NA
CIRCLING	1960-1 425 (500-1)	2160-1 625 (700-1)	2360-2½ 825 (900-2½)	NA

SE-4, 09 SEP 2021 to 07 OCT 2021

SE-4, 09 SEP 2021 to 07 OCT 2021