

APP CRS	Rwy Idg	<b>3000</b>
<b>108°</b>	TDZE	<b>840</b>
	Apt Elev	<b>840</b>

# RNAV (GPS) RWY 11

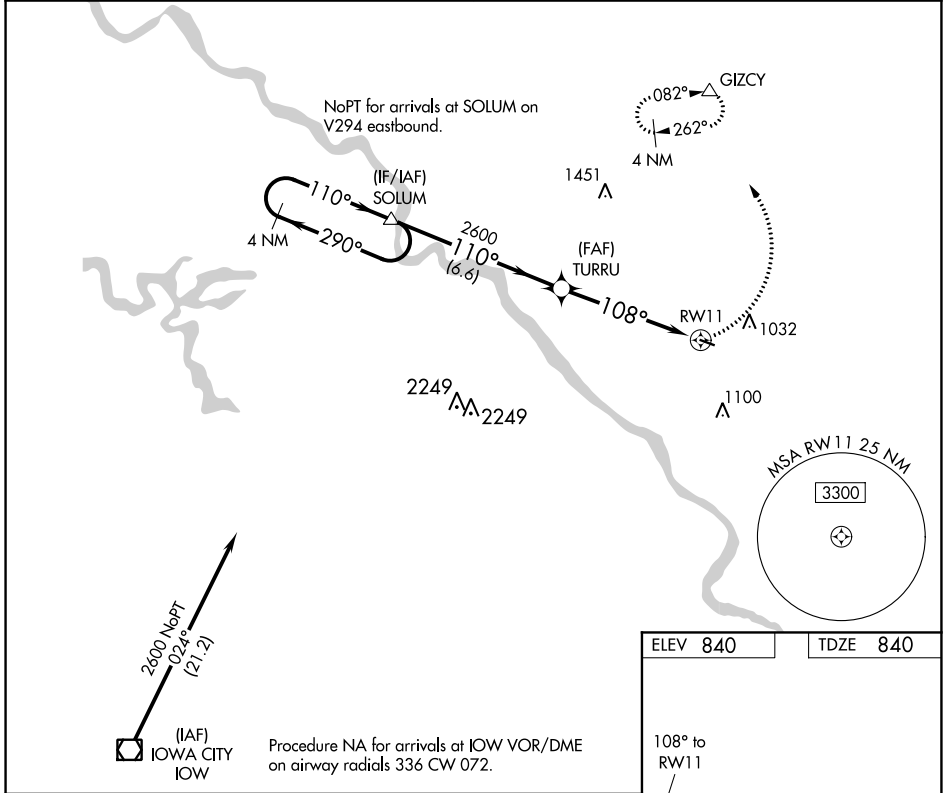
MATHEWS MEML (8C4)

**NA** DME/DME RNP-0.3 NA. Visibility reduction by helicopters NA. Use Iowa City altimeter setting, when not received use Cedar Rapids altimeter setting.

MISSED APPROACH: Climbing left turn to 3300 direct GIZCY and hold.

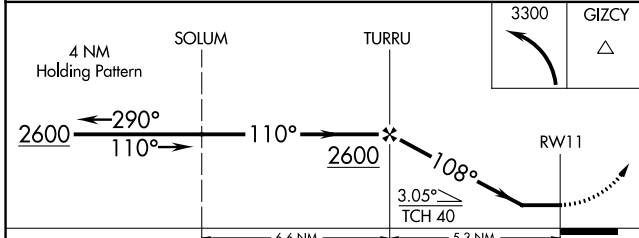
CEDAR RAPIDS APP CON ★  
**119.7 266.8**

CTAF  
**122.9**



NC-3, 09 SEP 2021 to 07 OCT 2021

NC-3, 09 SEP 2021 to 07 OCT 2021



ELEV 840	TDZE 840
----------	----------

CATEGORY	A	B	C	D
LNAV MDA	1360-1	520 (600-1)		NA
CIRCLING	1460-1	620 (700-1)		NA

MIRL Rwy 11-29  
REIL Rwy 11