

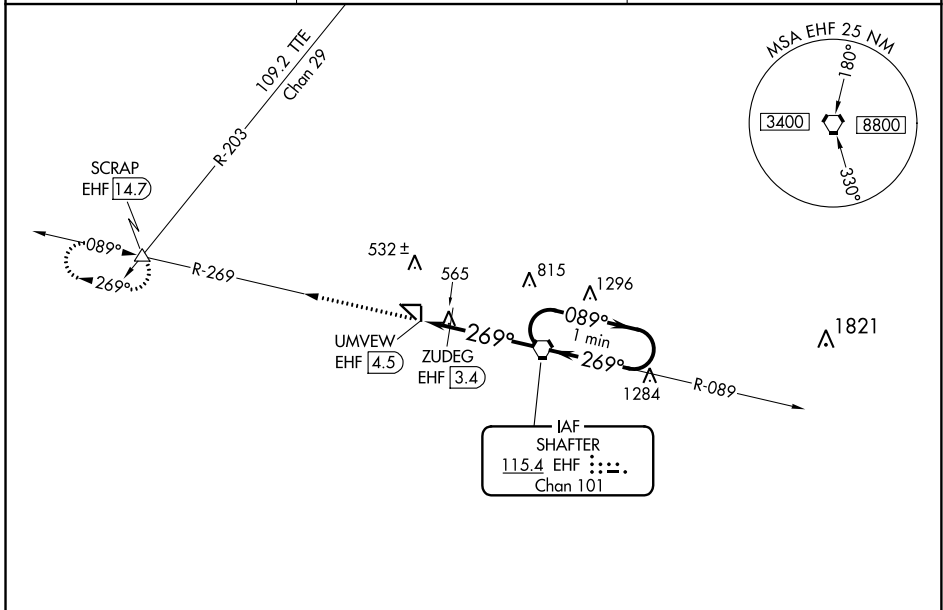
VORTAC EHF 115.4 Chan 101	APP CRS 269°	Rwy Idg TDZE Apt Elev	N/A N/A 425
--	------------------------	-----------------------------	--

VOR-A
SHAFTER-MINTER FLD (MIT)

NA Circling to Rwy 17, 35, 8 and 26 NA at night. When local altimeter setting not received, use Bakersfield altimeter setting and increase all MDAS 40 feet and increase Cat C visibility to 1 3/4.

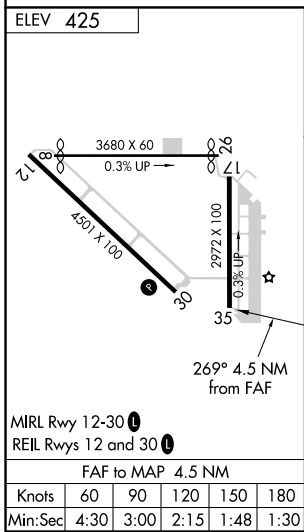
MISSED APPROACH: Climb to 4000 on EHF VORTAC R-269 to SCRAP INT/EHF 14.7 DME and hold, continue climb-in-hold to 4000.

AWOS-3 121.125	BAKERSFIELD APP CON * 126.45 270.3	CTAF 122.9
--------------------------	--	----------------------



SW-3, 09 SEP 2021 to 07 OCT 2021

SW-3, 09 SEP 2021 to 07 OCT 2021



4000 EHF R-269	SCRAP △	One Minute Holding Pattern			
	ZUDEG EHF 3.4	EHF VORTAC			
UMVEW EHF 4.5	269°		089°		
1000*	2600	2900	*1040 when using Bakersfield altimeter setting.		
1.1 NM	3.4 NM				
CATEGORY	A	B	C	D	
CIRCLING	1000-1	575 (600-1)	1000-1 1/2 575 (600-1 1/2)	NA	
ZUDEG FIX MINIMUMS					
CIRCLING	900-1	475 (500-1)	900-1 1/2 475 (500-1 1/2)	NA	