

WAAS CH <b>97430</b> <b>W13A</b>	APP CRS <b>129°</b>	Rwy Idg TDZE Apt Elev	<b>3700</b> <b>80</b> <b>80</b>
--	------------------------	-----------------------------	---------------------------------------

# RNAV (GPS) RWY 13

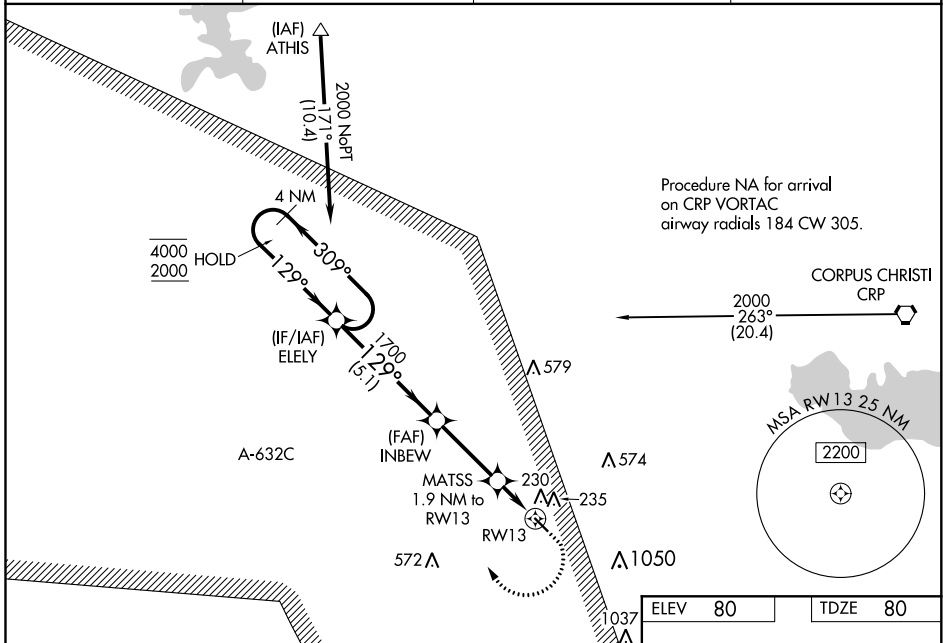
NUECES COUNTY (R.B.O)

RNP APCH.

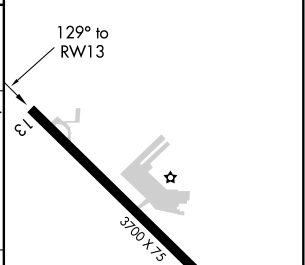
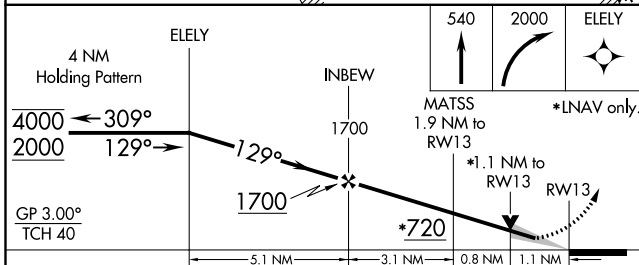
⚠ Circling NA northeast of Rwy 13-31. Procedure NA at night. Baro-VNAV and VDP NA when using Corpus Christi Intl altimeter setting. For uncompensated Baro-VNAV systems, LNAV/VNAV NA below -15°C or above 54°C. When local altimeter setting not received, use Corpus Christi Intl altimeter setting and increase LPV DA to 358 feet, LNAV/VNAV DA to 400 feet and all MDA 40 feet.

MISSED APPROACH: Climb to 540 then climbing right turn to 2000 direct ELEY and hold.

AWOS-3 <b>118.175</b>	KINGSVILLE APP CON * <b>119.9 290.45</b>	CTAF <b>122.9</b>	<b>122.8</b>
--------------------------	---	----------------------	--------------



ELEV 80	TDZE 80
---------	---------



CATEGORY	A	B	C	D
LPV DA	330-1	250 (300-1)		NA
LNAV/VNAV DA	372-1	292 (300-1)		NA
LNAV MDA	480-1	400 (400-1)		NA
CIRCLING	540-1 460 (500-1)	640-1 560 (600-1)		NA

MIRL Rwy 13-31

SC-3, 09 SEP 2021 to 07 OCT 2021

SC-3, 09 SEP 2021 to 07 OCT 2021