

WAAS CH 50340 W31A	APP CRS 309°	Rwy Idg 3700 TDZE 79 Apt Elev 80
--	------------------------	---

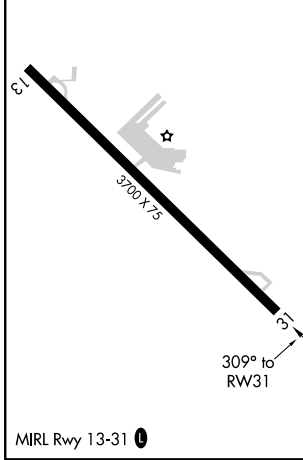
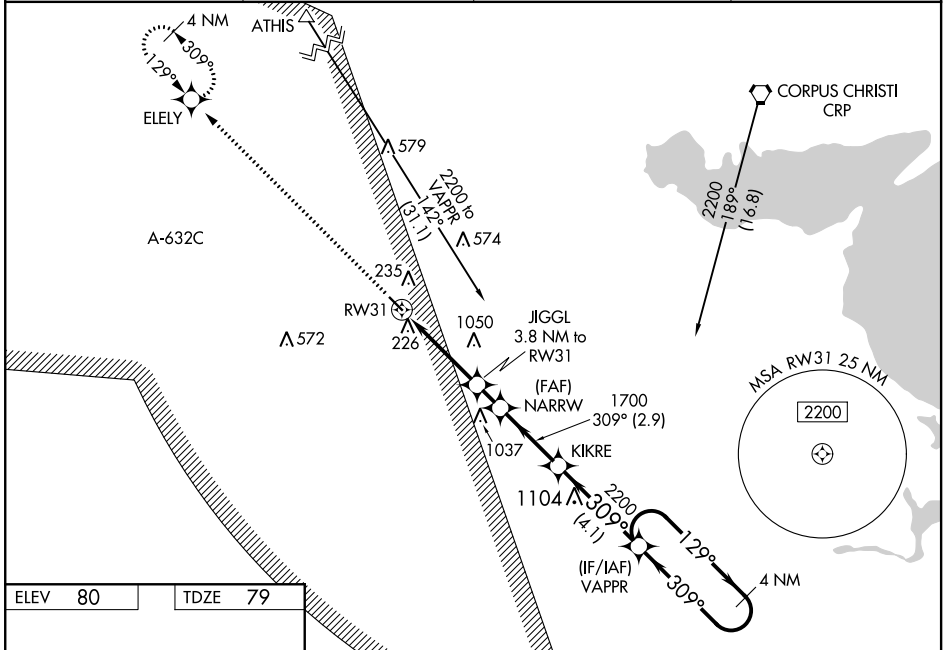
RNAV (GPS) RWY 31

NUECES COUNTY (R.B.O)

⚠ For uncompensated Baro-VNAV systems, LNAV/VNAV NA below -15°C (5°F) or above 54°C (130°F). Circling NA northeast of Rwy 13-31. Baro-VNAV and VDP NA when using Corpus Christi Intl altimeter setting. Rwy 31 helicopter visibility reduction below 3/4 SM NA. DME/DME RNP-0.3 NA. Procedure NA at night. When local altimeter not received, use Corpus Christi Intl altimeter setting and increase LPV DA to 357 feet, LNAV/VNAV DA to 398 feet and all MDA 40 feet, increase LNAV/VNAV all Cats visibility 1/8 SM.

MISSED APPROACH: Climb to 2000 direct ELEY and hold.

AWOS-3 118.175	KINGSVILLE APP CON * 119.9 290.45	CTAF 122.9	122.8 0
--------------------------	---	----------------------	-----------------------



2000	ELEY	NARRW	KIKRE	VAPPR	4 NM Holding Pattern
*LNAV only.		JIGGL 3.8 NM to RW31	1700	309°	129°
1.1 NM to RW31		1320	1700	2200	2200
1.1 NM	2.7 NM	1.2 NM	2.9 NM	4.1 NM	
CATEGORY	A	B	C	D	
LPV DA	329-1	250 (300-1)			NA
LNAV/VNAV DA	370-1	291 (300-1)			NA
LNAV MDA	480-1	401 (400-1)			NA
C CIRCLING	540-1	460 (500-1)			NA

GP 3.00°
TCH 40

SC-3, 09 SEP 2021 to 07 OCT 2021

SC-3, 09 SEP 2021 to 07 OCT 2021