

| | | |
|--|------------------------|---|
| WAAS CH 90535 W17A | APP CRS 174° | Rwy Idg 4000 TDZE 600 Apt Elev 600 |
|--|------------------------|---|

RNAV (GPS) RWY 17

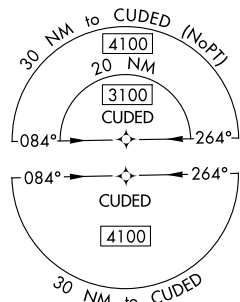
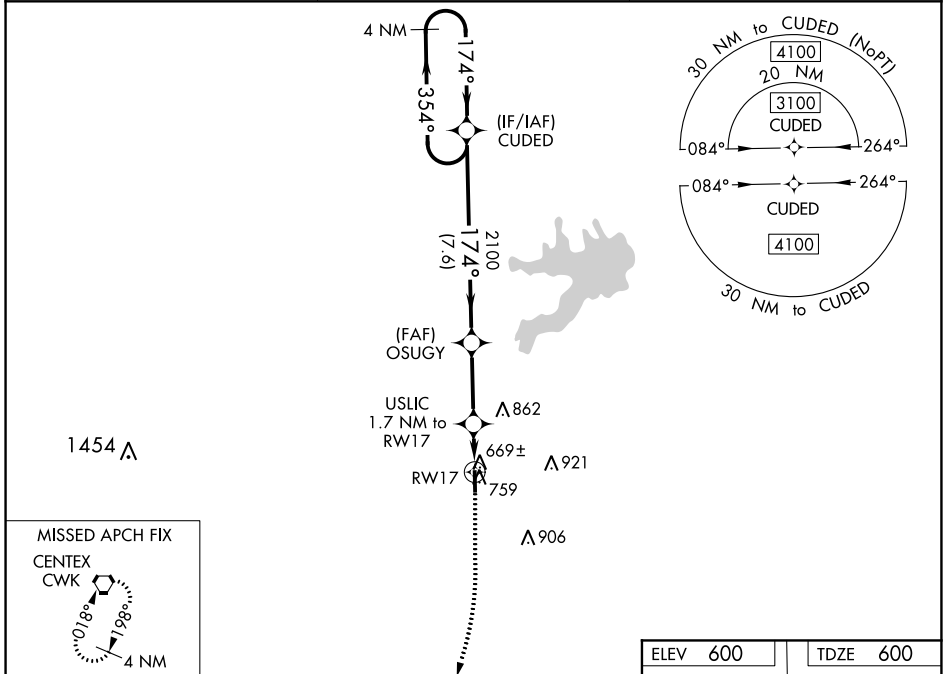
TAYLOR MUNI (T74)

RNP APCH.

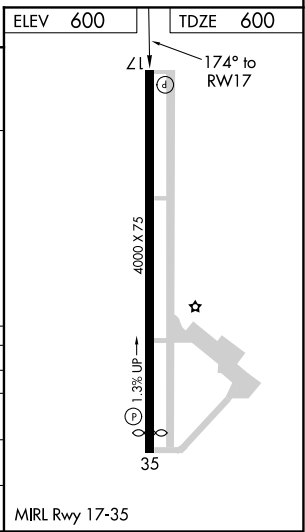
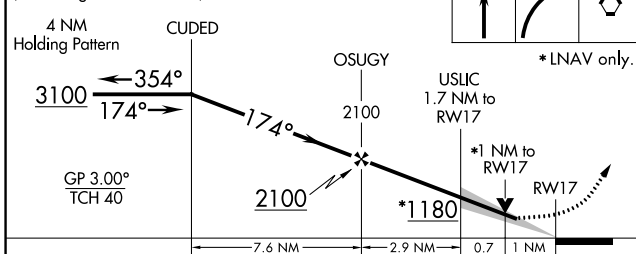
▽ For uncompensated Baro-VNAV systems, LNAV/VNAV NA below -16C or above 54C. When local altimeter setting not received, use Austin Exec altimeter setting and increase all DA to 914 feet and all MDA 40 feet. VDP and Baro-VNAV NA when using Austin Exec altimeter setting.

MISSED APPROACH: Climb to 1100 then climbing right turn to 3100 direct CWK VORTAC and hold.

| | | |
|---------------------------|---|-------------------------------|
| AWOS-3PT 119.75 | AUSTIN APP CON 127.225 317.65 | UNICOM 122.8 (CTAF) |
|---------------------------|---|-------------------------------|



VGSI and RNAV glidepath not coincident (VGSI Angle 3.00/TCH 40).



| CATEGORY | A | B | C | D |
|-------------------|---------|--------------|---|----|
| LPV DA | 882-7/8 | 282 (300-7%) | | NA |
| LNAV/VNAV DA | 882-7/8 | 282 (300-7%) | | NA |
| LNAV MDA | 960-1 | 360 (400-1) | | NA |
| C CIRCLING | 1100-1 | 500 (500-1) | | NA |

SC-3, 09 SEP 2021 to 07 OCT 2021

SC-3, 09 SEP 2021 to 07 OCT 2021