

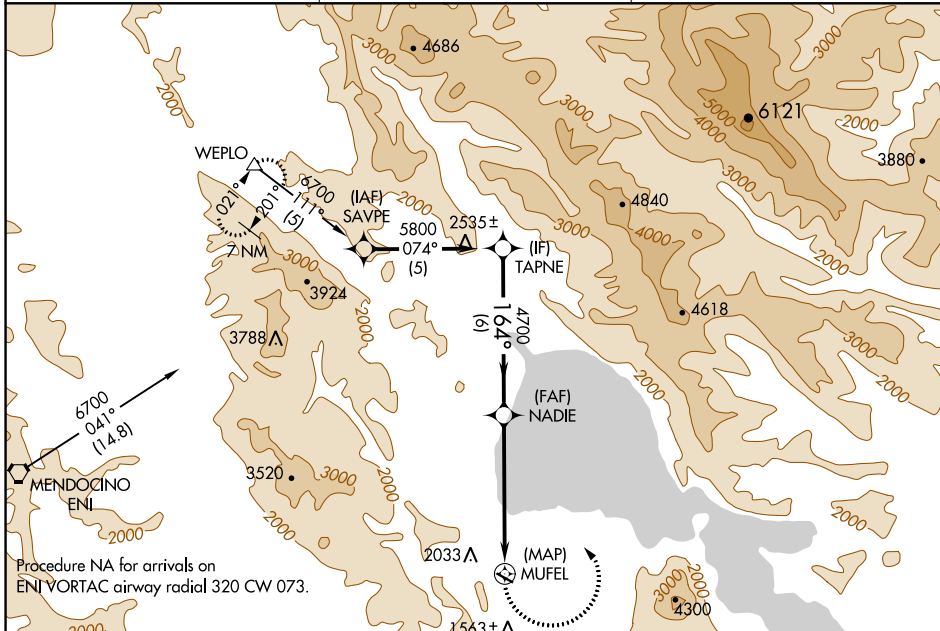
APP CRS 164°	Rwy Idg TDZE Apt Elev	N/A N/A 1380
------------------------	-----------------------------	---

RNAV (GPS)-A

LAMPSON FIELD (102)

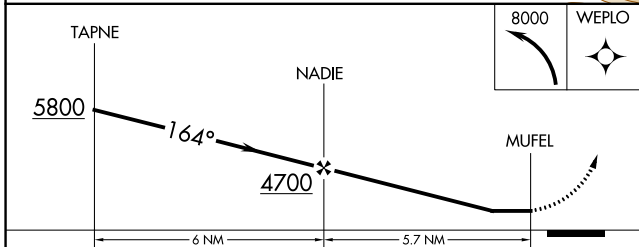
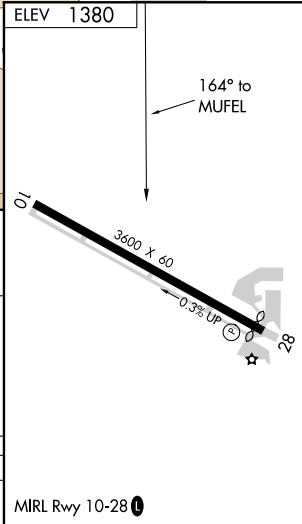
<p>NA Circling NA south of Rwy 10-28. DME/DME RNP-0.3 NA. Procedure NA at night. When local altimeter setting not received, use Ukiah altimeter setting and increase all MDA 560 feet.</p>	<p>MISSED APPROACH: Climbing left turn to 8000 direct WEPLO and hold.</p>
---	--

AWOS-3 118.35	OAKLAND CENTER 127.8 353.5	UNICOM 122.8 (CTAF) ①
-------------------------	--------------------------------------	---------------------------------



SW-2, 09 SEP 2021 to 07 OCT 2021

SW-2, 09 SEP 2021 to 07 OCT 2021



CATEGORY	A	B	C	D
CIRCLING	2580-1¼ 1200 (1200-1¼)	2580-1½ 1200 (1200-1½)	NA	

MIRL Rwy 10-28 ①