

VOR/DME OTB 109.8 Chan 35	APP CRS 015°	Rwy Idg TDZE Apt Elev	N/A N/A 392
---	------------------------	-----------------------------	--

VOR-A

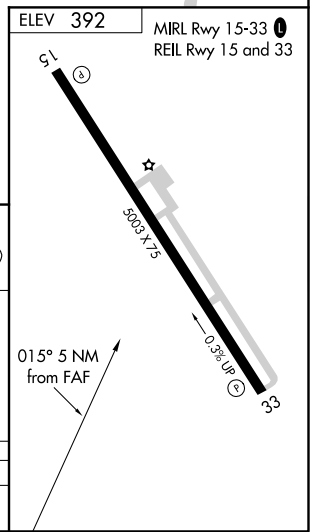
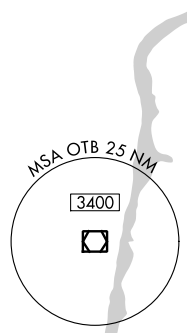
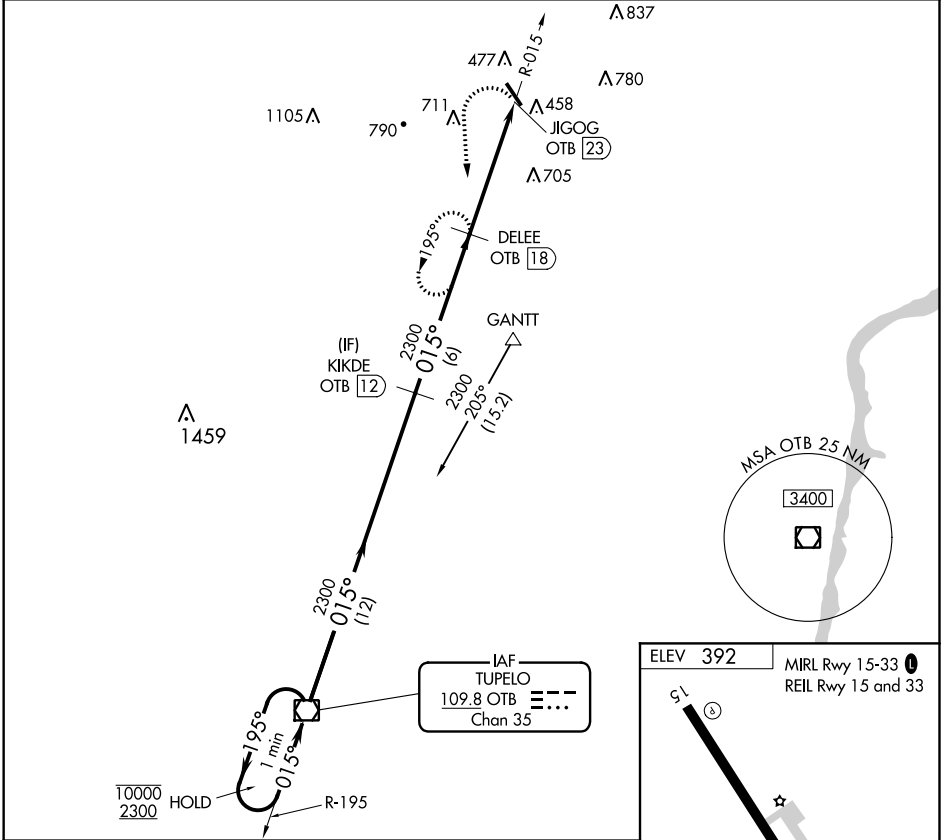
BOONEVILLE/BALDWIN (8M1)

DME required. RNAV 1-GPS or RADAR required for procedure entry.

▼ Use Corinth altimeter setting, when not received, use Tupelo altimeter setting and
▲ NA increase all MDA 20 feet and increase Cats C/D visibility ¼ mile.

MISSED APPROACH: Climbing left turn to 2300 on OTB VOR/DME R-015 to DELEE/OTB 18 DME and hold.

CRX AWOS-3PT 118.675	MEMPHIS CENTER 135.9 273.55	UNICOM 122.8 (CTAF) 0
--------------------------------	---------------------------------------	---------------------------------



One Minute Holding Pattern	OTB VOR/DME	KIKDE OTB 12	DELEE OTB 18	DELEE OTB 18
	10000 2300	2300	2300	
	← 195°	→ 015°		
	12 NM	6 NM	5 NM	
CATEGORY	A	B	C	D
CIRCLING	1120-1 728 (800-1)	1120-1¼ 728 (800-1¼)	1120-2 728 (800-2)	1120-2¼ 728 (800-2¼)

SC-4, 09 SEP 2021 to 07 OCT 2021

SC-4, 09 SEP 2021 to 07 OCT 2021