

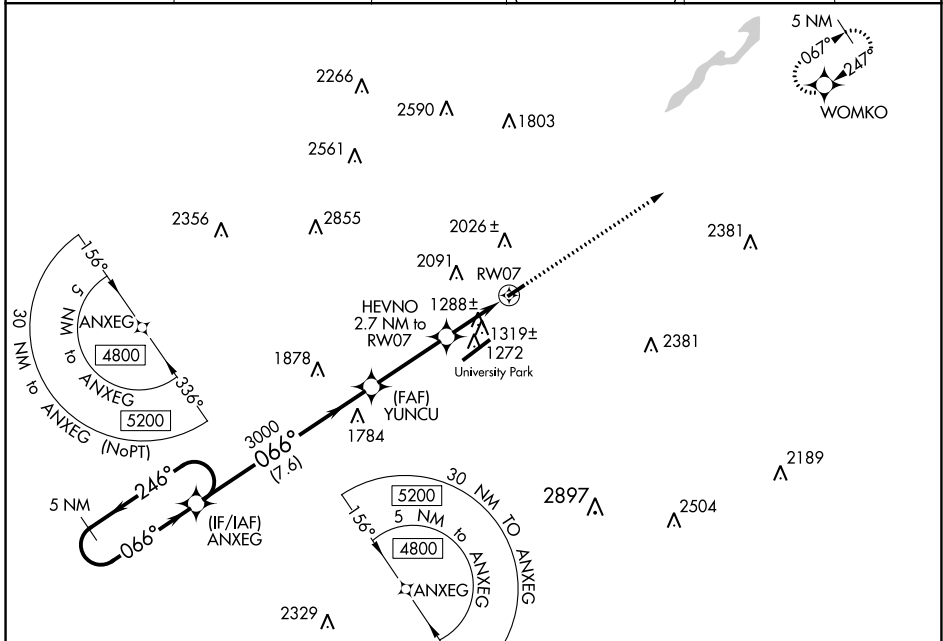
WAAS CH 42534 W07A	APP CRS 066°	Rwy Idg TDZE 1072 Apt Elev 1072	3632
--	------------------------	---	-------------

RNAV (GPS) RWY 7

BELLEFONTE (N96)

<p>▼ DME/DME RNP-0.3 NA. Use State College altimeter setting, when not received use Clearfield altimeter setting and increase all MDA 140 feet.</p> <p>▲ NA Helicopter visibility reduction below 1 SM NA. Circling NA southeast of Rwy 7-25. Procedure NA at night.</p>	<p>MISSED APPROACH: Climb to 4600 direct WOMKO and hold, continue climb-in-hold to 4600.</p>
--	---

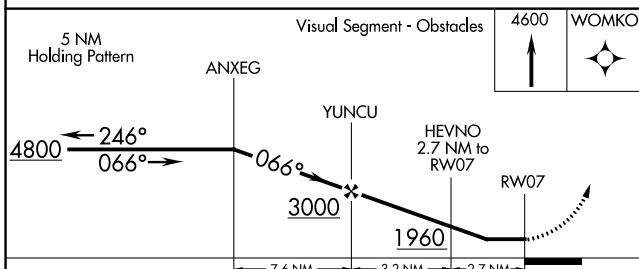
UNV AWOS-3 127.65	NEW YORK CENTER 134.8 338.3	CLNC DEL 119.625	CLNC DEL 118.55 (When UNV twr closed)	UNICOM 122.8 (CTAF)	122.7 0
-----------------------------	---------------------------------------	----------------------------	--	-------------------------------	-----------------------



NE-4, 09 SEP 2021 to 07 OCT 2021

NE-4, 09 SEP 2021 to 07 OCT 2021

ELEV 1072	TDZE 1072
-----------	-----------



CATEGORY	A	B	C	D
LP MDA	1540-1	468 (500-1)		NA
LNAV MDA	1580-1	508 (600-1)		NA
C CIRCLING	2140-1¼ 1068 (1100-1¼)	2380-1½ 1308 (1400-1½)		NA

