

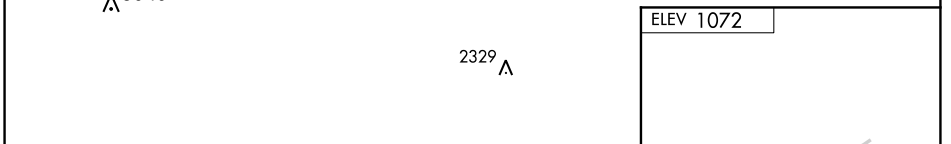
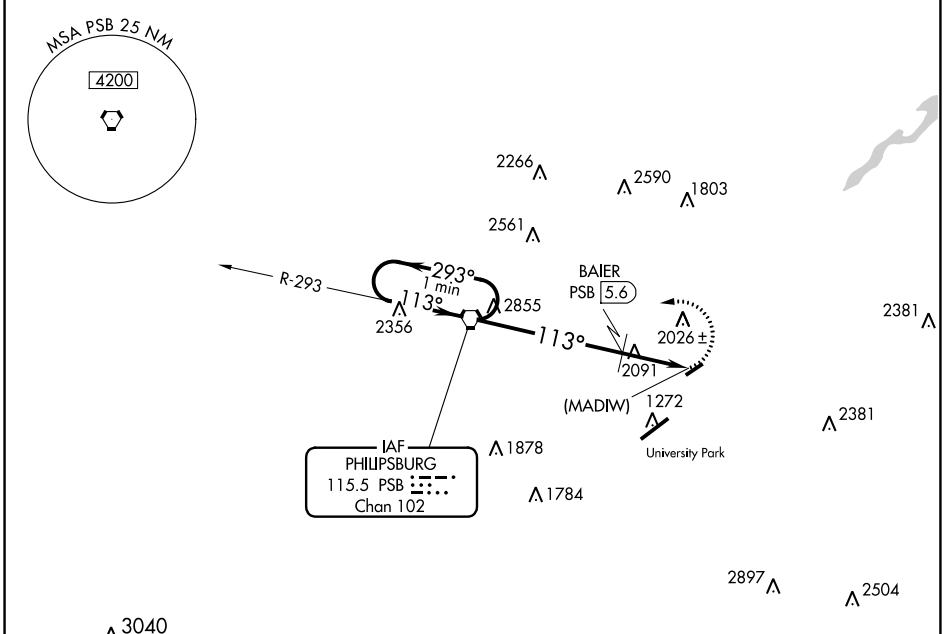
VORTAC PSB 115.5 Chan 102	APP CRS 113°	Rwy Idg TDZE Apt Elev N/A N/A 1072
---	------------------------	--

VOR-A
BELLEFONTE (N96)

NA Circling to Rwy 7 NA at night. Helicopter visibility reduction below 1 SM NA. Use State College altimeter setting, when not received use Clearfield altimeter setting and increase all MDA 140 feet. Circling NA southeast of Rwy 7-25.

MISSED APPROACH: Climbing left turn to 4000 direct PSB VORTAC and hold.

UNV AWOS-3 127.65	NEW YORK CENTER 134.8 338.3	CLNC DEL 119.625	CLNC DEL 118.55 (When UNV twr closed)	UNICOM 122.8 (CTAF)	122.7 0
-----------------------------	---------------------------------------	----------------------------	--	-------------------------------	-----------------------



One Minute Holding Pattern	PSB VORTAC	*3060 when using Clearfield altimeter setting.	4000 PSB	113° 8 NM from FAF
4000	293°	113°	BAIER PSB 5.6	(MADIW) PSB 8
		*2920	5.6 NM	2.4 NM

CIRCLING	A 2920-1¼ 1848 (1900-1¼)	B 2920-1½ 1848 (1900-1½)	C	D NA	LIRL Rwy 7-25 0
BAIER FIX MINIMUMS (DME REQUIRED)					FAF to MAP 8 NM
CIRCLING	2360-1¼ 1288 (1300-1¼)	2380-1½ 1308 (1400-1½)	C	D NA	Knots: 60 90 120 150 180 Min:Sec: 8:00 5:20 4:00 3:12 2:40

NE-4, 09 SEP 2021 to 07 OCT 2021

NE-4, 09 SEP 2021 to 07 OCT 2021