

# RNAV (GPS)-A

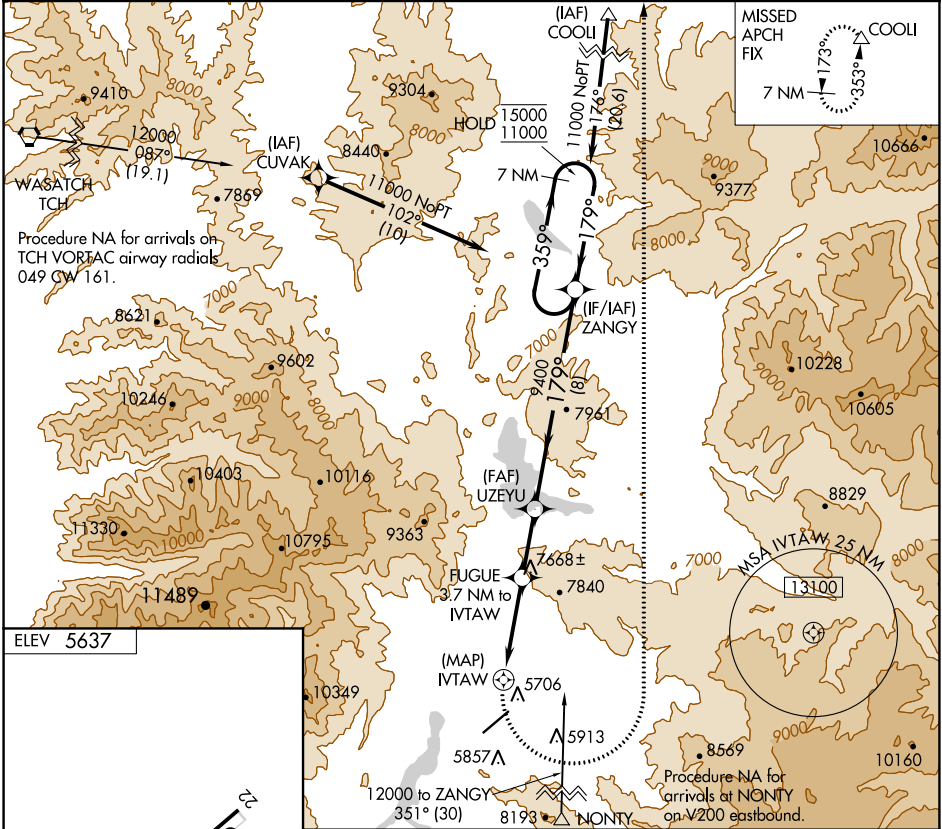
HEBER VALLEY (HCR)

APP CRS <b>179°</b>	Rwy Idg TDZE Apt Elev	<b>N/A</b> <b>N/A</b> <b>5637</b>
------------------------	-----------------------------	---

RNP APCH.  
 Circling NA south of Rwy 4-22.  
 Circling Rwy 4 NA at night.  
 -17°C

MISSED APPROACH: (Do not exceed 210K until turn completion)  
 Climbing left turn to 12000 direct COOLI and hold.

AWOS-3PT <b>124.825</b>	SALT LAKE CITY CENTER <b>119.95 377.15</b>	UNICOM <b>122.8 (CTAF)</b>
----------------------------	---	-------------------------------

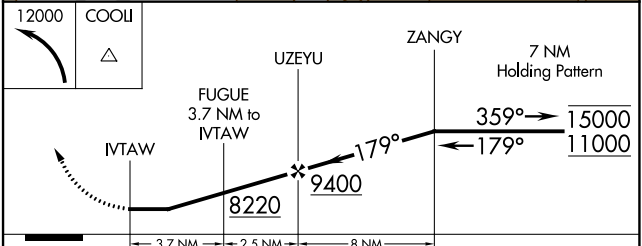


Procedure NA for arrivals on TCH VORTAC airway radials 049 CW 161.

Procedure NA for arrivals at NONTY on V200 eastbound.

ELEV 5637

MIRL Rwy 4-22



CATEGORY	A	B	C	D
CIRCLING	8020-1½	2383 (2400-1½)	8020-3 2383 (2400-3)	NA

SW-4, 09 SEP 2021 to 07 OCT 2021

SW-4, 09 SEP 2021 to 07 OCT 2021