

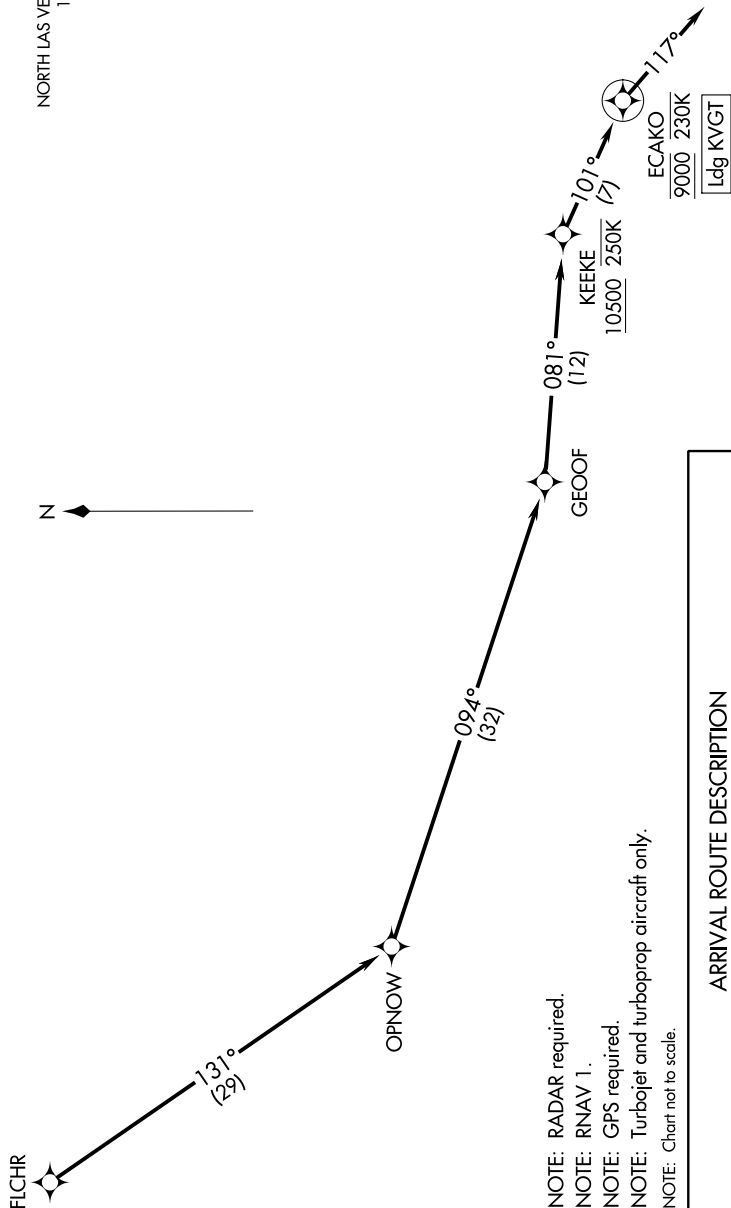
(FLCHR.FLCHR1) 21056

FLCHR ONE ARRIVAL (RNAV)

AL-6970 (FAA)

NORTH LAS VEGAS (VGT)
LAS VEGAS, NEVADA

NELLIS APP CON
118.125 291.725
ATIS
118.05
NORTH LAS VEGAS TOWER ★
125.7 360.75



- NOTE: RADAR required.
- NOTE: RNAV 1.
- NOTE: GPS required.
- NOTE: Turbopjet and turboprop aircraft only.
- NOTE: Chart not to scale.

ARRIVAL ROUTE DESCRIPTION

From FLCHR on track 131° to OPNOW, then on track 094° to GEOOF, then on track 081° to cross KEEKE at or above 10500 and at or below 250K, then on track 101° to cross ECAKO at 9000 and at or below 230K, then on track 117°. Expect RADAR vectors to final approach course.

SW-4, 09 SEP 2021 to 07 OCT 2021

SW-4, 09 SEP 2021 to 07 OCT 2021

FLCHR ONE ARRIVAL (RNAV)

(FLCHR.FLCHR1) 25FEB21

LAS VEGAS, NEVADA
NORTH LAS VEGAS (VGT)