

LOC/DME I-HWGW 110.7 Chan 44	APP CRS 120°	Rwy Idg TDZE Apt Elev	4199 2189 2205
--	------------------------	-----------------------------	---

ILS or LOC RWY 12L

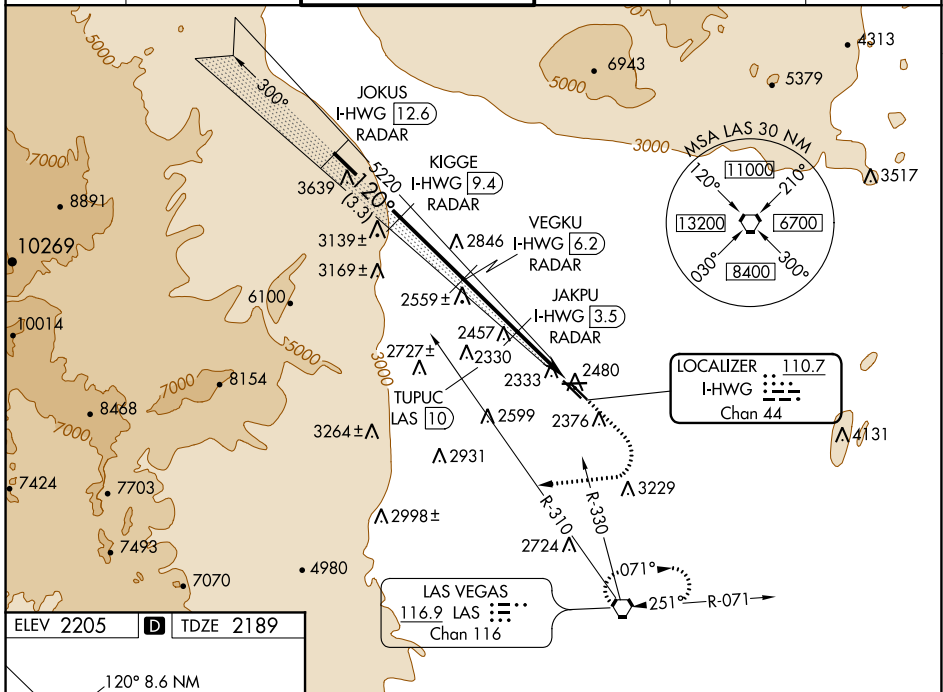
NORTH LAS VEGAS (VGT)

DME and RADAR required.

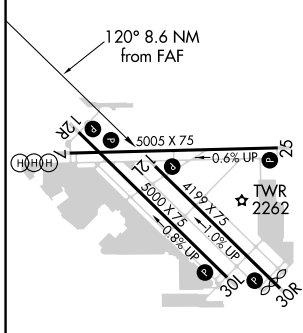
▼ When local altimeter setting not received, use Harry Reid Intl altimeter setting and increase DA to 2478, and visibility
▲ Cats A/B ¼ mile; increase all MDA 40 feet. Rwy 12L helicopter visibility reduction below ¾ SM NA.

MISSED APPROACH: Climb to 2600, then climbing right turn heading 250° to 6000, intercept LAS R-310 outbound to TUPUC/LAS 10 DME then turn right via LAS R-330 inbound to LAS VORTAC and hold.

ATIS 118.05	LAS VEGAS APP CON 119.4 360.85	NORTH LAS VEGAS TOWER * 125.7 (CTAF) 360.75	GND CON 121.7	CLNC DEL 124.0	UNICOM 122.95
-----------------------	--	---	-------------------------	--------------------------	-------------------------



ELEV 2205	D	TDZE 2189
-----------	----------	-----------



CATEGORY	A	B	C	D
S-ILS 12L	2456-1	267 (300-1)		NA
S-LOC 12L	2620-1	431 (500-1)		NA
C CIRCLING	2720-1	515 (600-1)		NA

FAF to MAP 8.6 NM					
Knots	60	90	120	150	180
Min:Sec	8:36	5:44	4:18	3:26	2:52

LAS VEGAS, NEVADA
Orig-E 18JUN20

36°13'N-115°12'W

NORTH LAS VEGAS (VGT)

ILS or LOC RWY 12L

SW-4, 09 SEP 2021 to 07 OCT 2021

SW-4, 09 SEP 2021 to 07 OCT 2021