

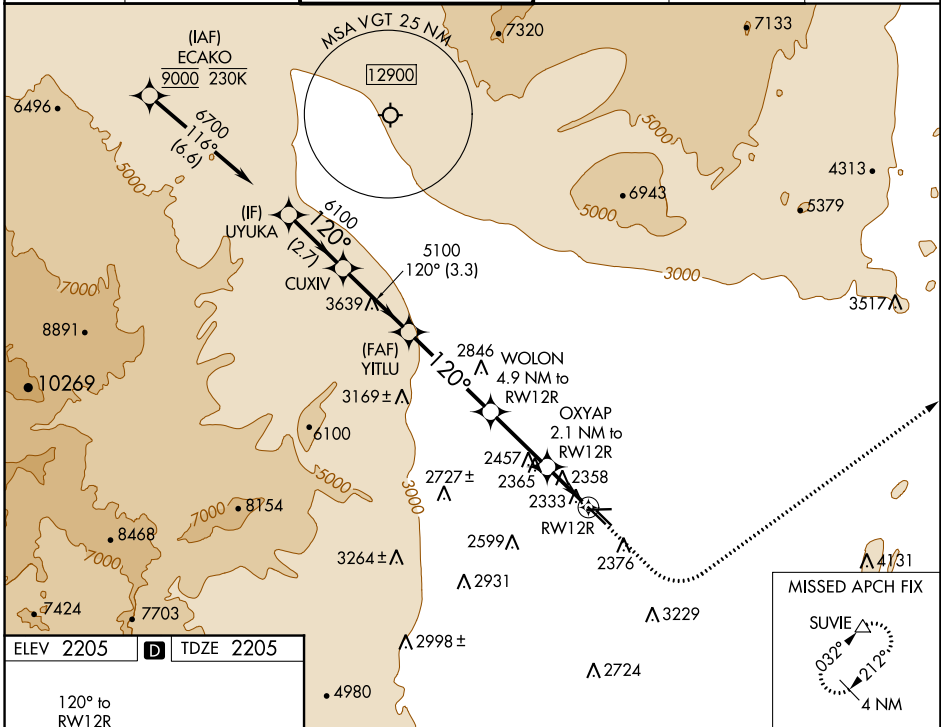
WAAS CH 69443 W12A	APP CRS 120°	Rwy Idg TDZE Apt Elev	5000 2205 2205
--	------------------------	-----------------------------	---

RNAV (GPS) RWY 12R

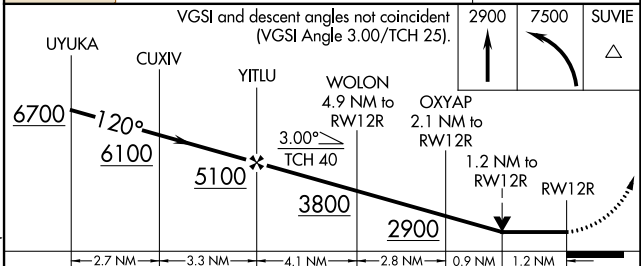
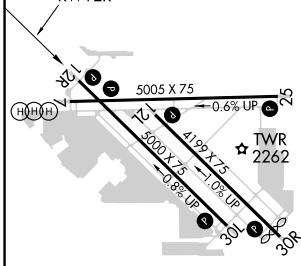
NORTH LAS VEGAS (VGT)

RNP APCH.	MISSED APPROACH: Climb to 2900 then climbing left turn to 7500 direct SUVIE and hold, continue climb-in-hold to 7500.
Rwy 12R helicopter visibility reduction below 3/4 SM NA.	

ATIS 118.05	LAS VEGAS APP CON 119.4 360.85	NORTH LAS VEGAS TOWER* 125.7 (CTAF) 360.75	GND CON 121.7	CLNC DEL 124.0	UNICOM 122.95
-----------------------	--	--	-------------------------	--------------------------	-------------------------



ELEV 2205	D	TDZE 2205
-----------	----------	-----------



	A	B	C	D
CATEGORY	A	B	C	D
LP MDA	2620-1	415 (500-1)	2620-1½	415 (500-1½)
LNAV MDA	2820-1	615 (700-1)	2840-1¾	615 (700-1¾)
C CIRCLING	2820-1	615 (700-1)	2840-1¾ 635 (700-1¾)	3540-3 1335 (1400-3)

REIL all Rwys
MIRL all Rwys

SW-4, 09 SEP 2021 to 07 OCT 2021

SW-4, 09 SEP 2021 to 07 OCT 2021