

WAAS CH 82419 W15A	APP CRS 152°	Rwy Idg TDZE Apt Elev	5006 132 132
--	------------------------	-----------------------------	---

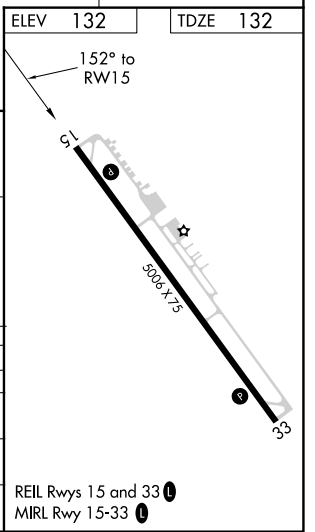
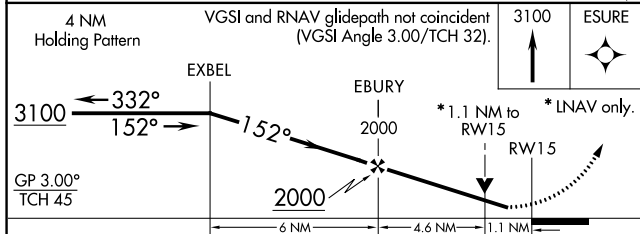
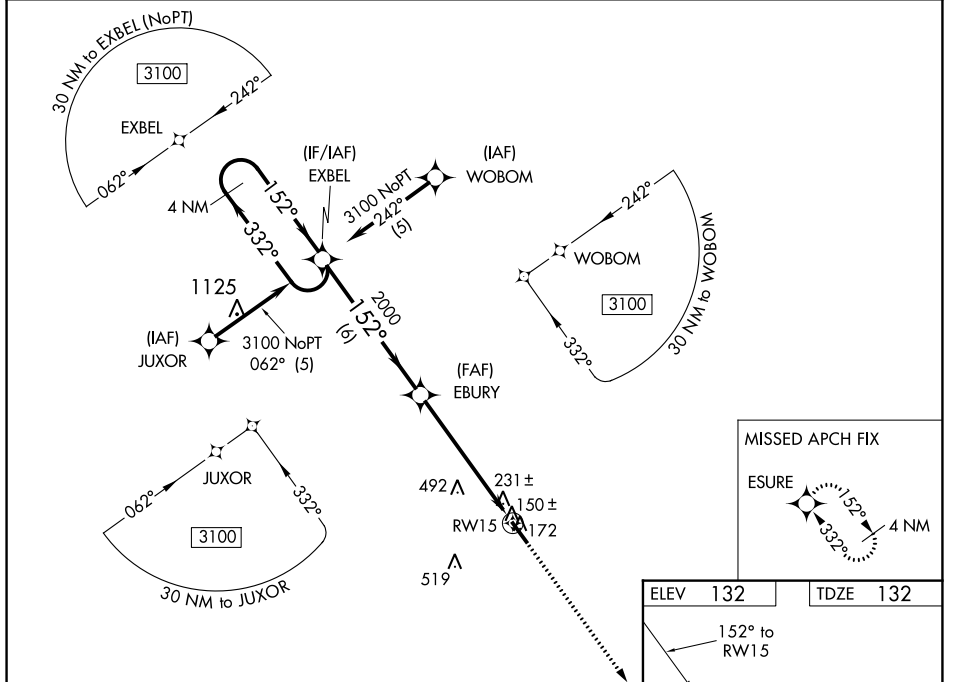
RNAV (GPS) RWY 15

CURTIS L BROWN JR FIELD (EYF)

⚠ DME/DME RNP-0.3 NA. Visibility reduction by helicopters NA. When local altimeter setting not received, use Fayetteville, NC altimeter setting; increase LPV DA to 454 feet, LNAV/VNAV DA to 601 feet, and all MDAs 80 feet, and increase LPV and LNAV/VNAV all Cats visibility ¼ SM, LNAV Cats C and D and Circling Cats C and D visibility ½ SM. Baro-VNAV and VDP NA when using Fayetteville, NC altimeter setting. For uncompensated Baro-VNAV systems, LNAV/VNAV NA below -1.5°C (5°F) or above 48°C (118°F).

⚠ MISSED APPROACH: Climb to 3100 direct ESURE and hold, continue climb-in-hold to 3100.

AWOS-3P 119.475	FAYETTEVILLE APP CON 133.0 290.25	UNICOM 122.8 (CTAF) 0
---------------------------	---	---------------------------------



CATEGORY	A	B	C	D
LPV DA		382-1	250 (300-1)	
LNAV/VNAV DA		529-1½	397 (400-1½)	
LNAV MDA	660-1	528 (600-1)	660-1½ 528 (600-1½)	660-1¾ 528 (600-1¾)
CIRCLING	660-1	528 (600-1)	880-2¼ 748 (800-2¼)	880-2½ 748 (800-2½)

SE-2, 09 SEP 2021 to 07 OCT 2021

SE-2, 09 SEP 2021 to 07 OCT 2021