

VOR/DME <b>FAY</b>	APP CRS	Rwy Idg	<b>5006</b>
<b>108.8</b>	<b>152°</b>	TDZE	<b>132</b>
Chan <b>25</b>		Apt Elev	<b>132</b>

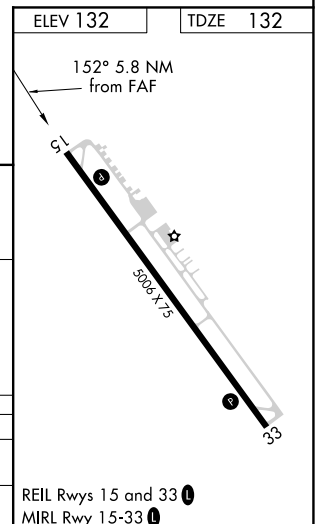
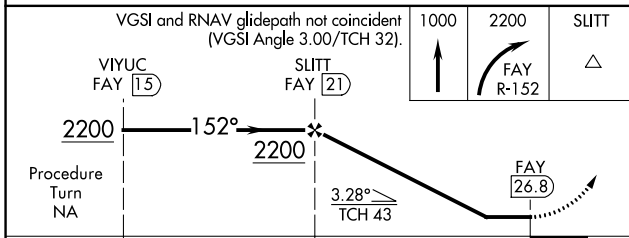
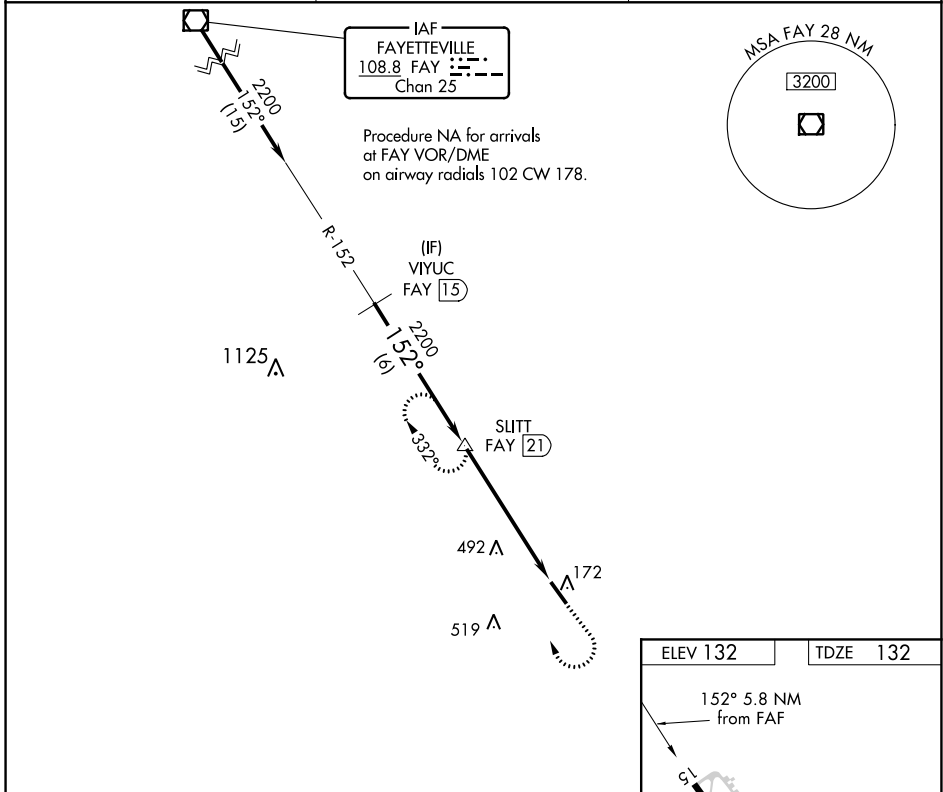
# VOR/DME RWY 15

CURTIS L BROWN JR FIELD (EYF)

**▼** Visibility reduction by helicopters NA. When local altimeter setting not received, use Fayetteville altimeter setting; increase all MDA 80 feet and increase S-15 Cats C and D and Circling Cat C and D visibility ¼ SM.

**▲** MISSED APPROACH: Climb to 1000 then climbing right turn to 2200 on FAY R-152 to SLITT/21 DME and hold.

AWOS-3P <b>119.475</b>	FAYETTEVILLE APP CON <b>133.0 290.25</b>	UNICOM <b>122.8 (CTAF)</b>
---------------------------	---	-------------------------------



	VGSI and RNAV glidepath not coincident (VGSI Angle 3.00/TCH 32).			
	VIYUC FAY 15	SLITT FAY 21	1000	2200
	2200	2200	▲	SLITT ▲
	Procedure Turn NA		▲	FAY R-152
	6 NM		5.8 NM	
CATEGORY	A	B	C	D
S-15	760-1 628 (700-1)	760-1¼ 628 (700-1¼)	760-1¾ 628 (700-1¾)	760-2 628 (700-2)
CIRCLING	760-1 628 (700-1)	760-1¼ 628 (700-1¼)	880-2¼ 748 (800-2¼)	880-2½ 748 (800-2½)

SE-2, 09 SEP 2021 to 07 OCT 2021

SE-2, 09 SEP 2021 to 07 OCT 2021