

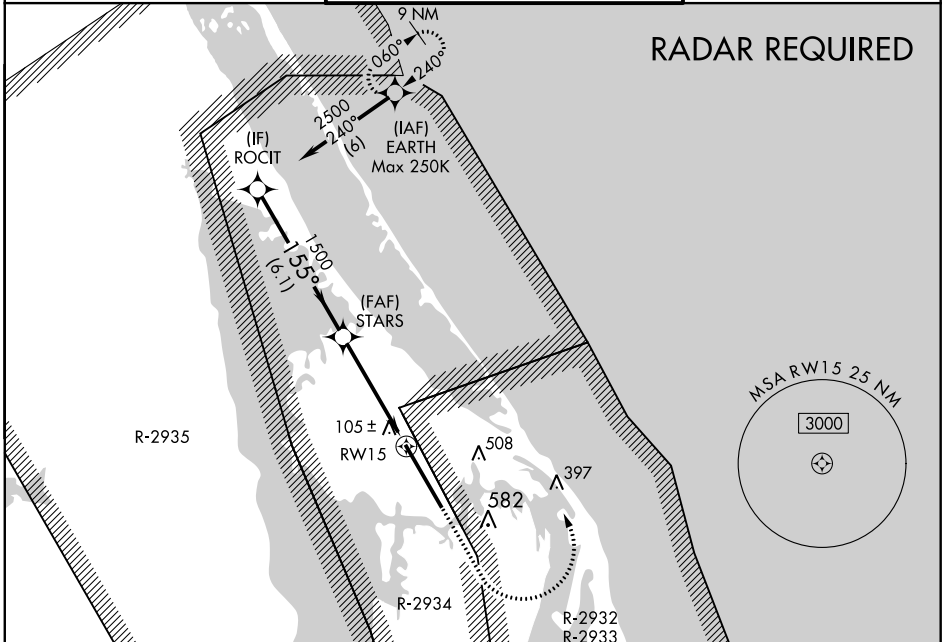
WAAS CH <b>50534</b> <b>W15A</b>	APP CRS <b>155°</b>	Rwy Idg <b>15001</b> TDZE <b>8</b> Apt Elev <b>9</b>
--	------------------------	--

# RNAV (GPS) RWY 15

NASA SHUTTLE LANDING FACILITY (TTS)

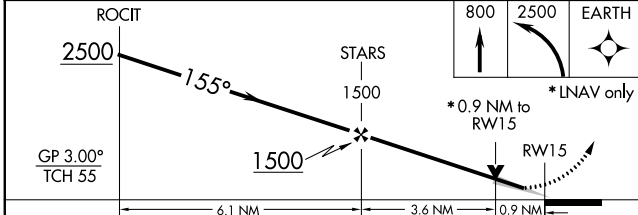
<p><b>▽</b> For uncompensated Baro-VNAV systems, LNAV/VNAV NA below -15°C (5°F) or above 54°C (130°F). DME/DME RNP-0.3 NA. Inop table does not apply.</p> <p><b>▲</b></p>	ALS-2	MISSED APPROACH: Climb to 800, then climbing left turn to 2500 direct EARTH and hold.
---	-------	---

ORLANDO APP CON <b>134.95 281.425</b>	NASA TOWER * <b>128.55 (CTAF) 284.0</b>	GND CON <b>121.75</b>
--	--	--------------------------

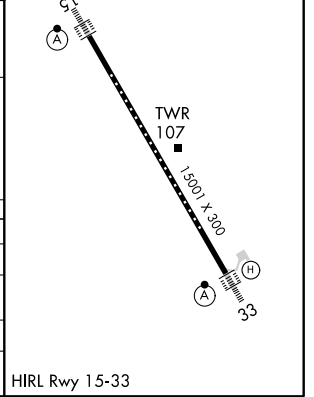


**RADAR REQUIRED**

ELEV 9	TDZE 8
--------	--------



CATEGORY	A	B	C	D	E
LPV DA		208-1	200 (200-1)		
LNAV/VNAV DA		286-1	278 (300-1)		
LNAV MDA		360-1	352 (400-1)		
<b>☐</b> CIRCLING	420-1 411 (500-1)	460-1 451 (500-1)	940-2 <sup>3</sup> / <sub>4</sub> 931 (1000-2 <sup>3</sup> / <sub>4</sub> )	940-3	931 (1000-3)



SE-3, 09 SEP 2021 to 07 OCT 2021

SE-3, 09 SEP 2021 to 07 OCT 2021