

WAAS CH <b>82029</b> <b>W13A</b>	APP CRS <b>134°</b>	Rwy Idg <b>3300</b> TDZE <b>859</b> Apt Elev <b>859</b>
--	------------------------	---

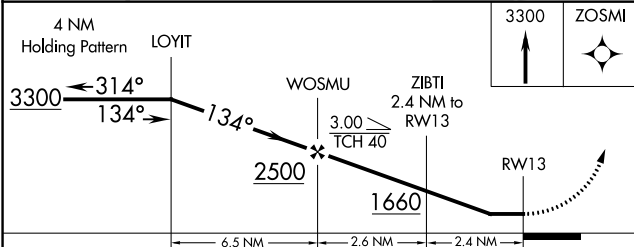
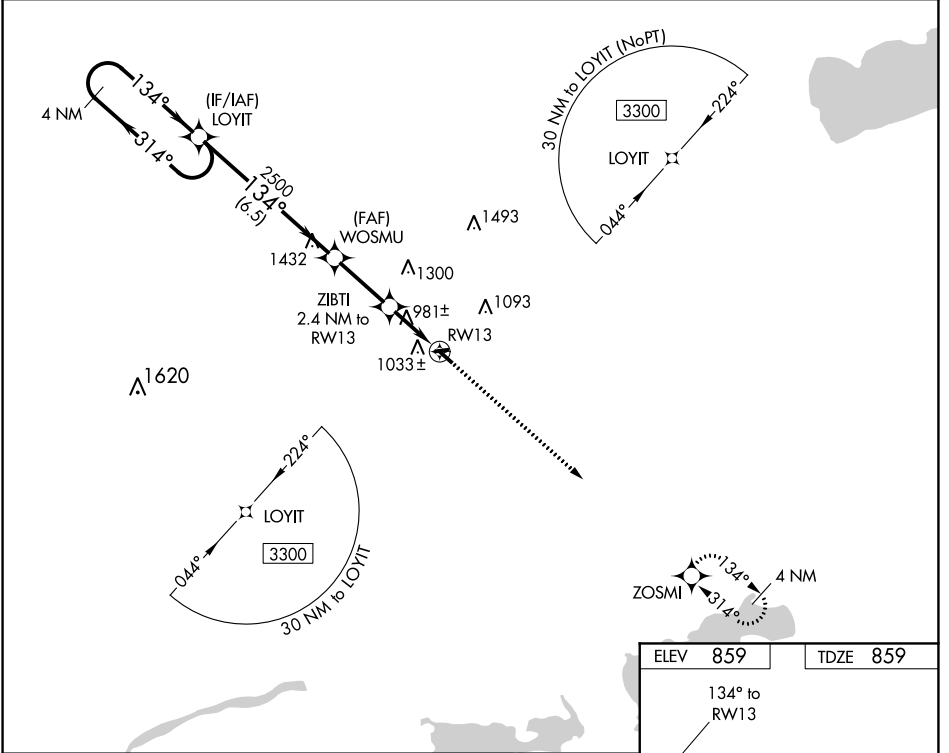
# RNAV (GPS) RWY 13

WAUTOMA MUNI (Y50)

**⚠** DME/DME RNP-0.3 NA. Visibility reduction by helicopters NA. When local altimeter setting not received, use Oshkosh altimeter setting and increase all MDA 100 feet. Procedure NA at night.

**⚠** MISSED APPROACH: Climb to 3300 direct ZOSMI and hold.

AWOS-3PT <b>119.475</b>	MILWAUKEE APP CON <b>127.0 263.075</b>	UNICOM <b>122.8 (CTAF)</b> <b>📻</b>
----------------------------	---	--



ELEV 859	TDZE 859
----------	----------

The RWY 13 diagram shows a runway with a width of 26 feet and a length of 2334 feet. The runway is oriented at 134° to RWY 13. A MIRA (MIRL) is located at the end of the runway, with a length of 3300 feet and a width of 40 feet. The runway is labeled RWY 13-31.

CATEGORY	A	B	C	D
LP MDA	1240-1	381 (400-1)		NA
LNVA MDA	1300-1	441 (500-1)		NA
CIRCLING	1340-1 481 (500-1)	1380-1 521 (600-1)		NA

EC-3, 09 SEP 2021 to 07 OCT 2021

EC-3, 09 SEP 2021 to 07 OCT 2021