

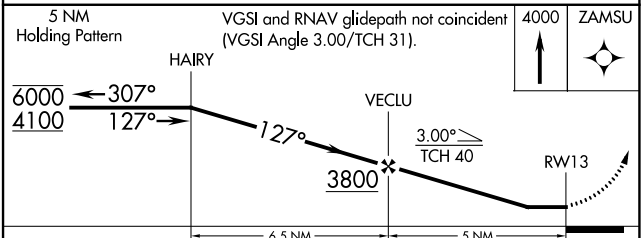
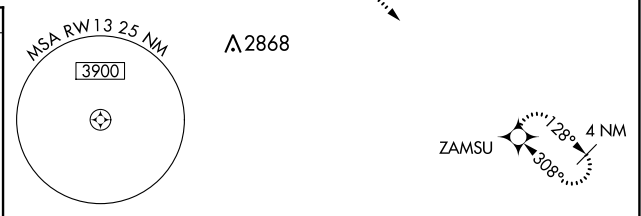
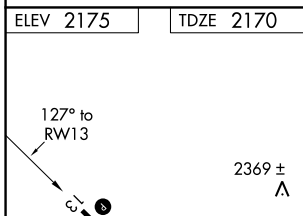
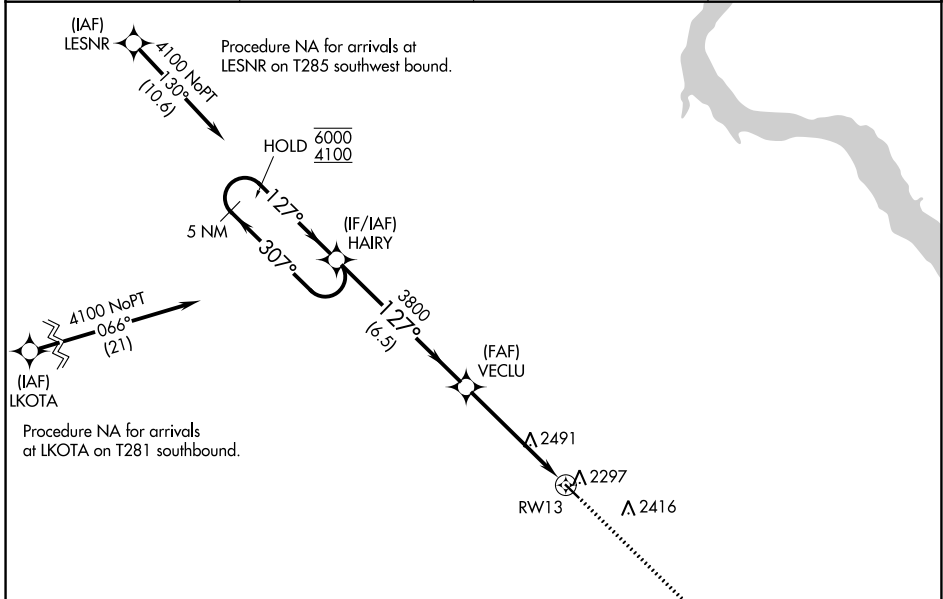
APP CRS	Rwy Idg	3799
127°	TDZE	2170
	Apt Elev	2175

RNAV (GPS) RWY 13

GREGORY MUNI-FLYNN FLD (9D1)

RNP APCH.		MISSED APPROACH: Climb to 4000 direct ZAMSU and hold.
<p>▽ Rwy 13 helicopter visibility reduction below ¼ SM NA. Use Winner altimeter setting; when not received, use Ainsworth altimeter setting and increase all MDA 100 feet; increase LNAV Cat B visibility ¼ SM and Cat C visibility ½ SM.</p> <p>△ NA</p>		

ICR ASOS 126.775	MINNEAPOLIS CENTER 125.1 269.1	GCO 121.725	AUNICOM 122.8 (CTAF) 0
----------------------------	--	-----------------------	----------------------------------



CATEGORY	A	B	C	D
LNAV MDA	2820-1	650 (700-1)	2820-1 7/8 650 (700-1 7/8)	NA

NC-1, 09 SEP 2021 to 07 OCT 2021

NC-1, 09 SEP 2021 to 07 OCT 2021