

| | | | |
|--|------------------------|-----------------------------|---|
| WAAS CH 77630 W31A | APP CRS 308° | Rwy Idg TDZE Apt Elev | 3799 2169 2175 |
|--|------------------------|-----------------------------|---|

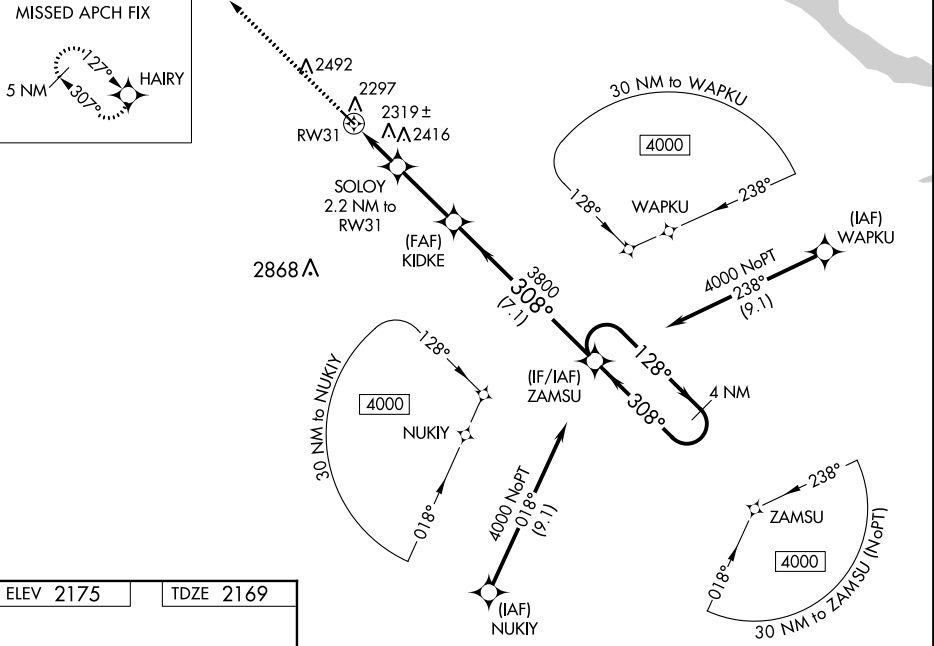
RNAV (GPS) RWY 31

GREGORY MUNI-FLYNN FLD (9D1)

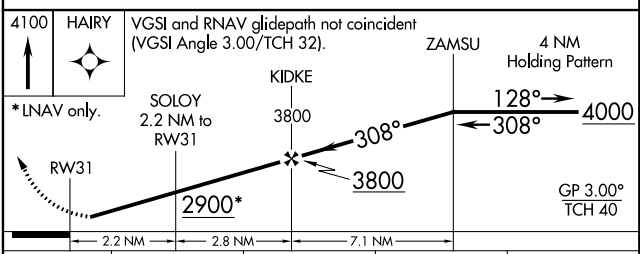
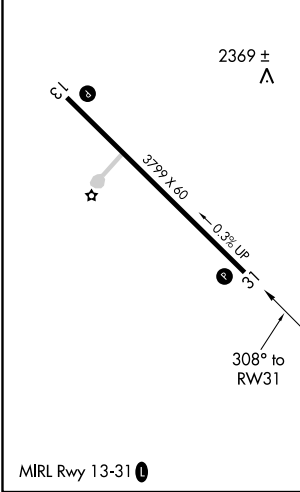
NA Helicopter visibility reduction below 1 SM NA. When VGSI inoperative, Circling Rwy 13 NA at night. Baro-VNAV NA. When VGSI inoperative, Straight-in/Circling Rwy 31 procedure NA at night. DME/DME RNP-0.3 NA. Use Winner altimeter setting; when not received use Ainsworth altimeter setting and increase all DA 95 feet and all MDA 100 feet and increase LPV all Cats visibility ¼ SM, LNAV/VNAV all Cats visibility ⅓ SM, LNAV Cat C and Circling Cat C visibility ¼ SM.

MISSED APPROACH:
Climb to 4100 direct
HAIRY and hold.

| | | | |
|----------------------------|--|-----------------------|----------------------------------|
| ICR ASOS 126.775 | MINNEAPOLIS CENTER 125.1 269.1 | GCO 121.725 | AUNICOM 122.8 (CTAF) 0 |
|----------------------------|--|-----------------------|----------------------------------|



| | |
|-----------|-----------|
| ELEV 2175 | TDZE 2169 |
|-----------|-----------|



| CATEGORY | A | B | C | D |
|--------------|-----------------------|-----------------------|-------------------------------|----|
| LPV DA | 2489-1 1/8 | 320 (400-1 1/8) | | NA |
| LNAV/VNAV DA | 2709-1 7/8 | 540 (600-1 7/8) | | NA |
| LNAV MDA | 2640-1 | 471 (500-1) | 2640-1 3/8 471 (500-1 3/8) | NA |
| CIRCLING | 2700-1 525 (600-1) | 2780-1 605 (700-1) | 2880-2 705 (800-2) | NA |

NC-1, 09 SEP 2021 to 07 OCT 2021

NC-1, 09 SEP 2021 to 07 OCT 2021