

LOC/DME I-GAO 109.1 Chan 28	APP CRS 359°	Rwy ldg 6500 TDZE -2 Apt Elev 0
--	------------------------	--


ILS or LOC RWY 36

SOUTH LAFOURCHE LEONARD MILLER JR (GAO)

DME required.

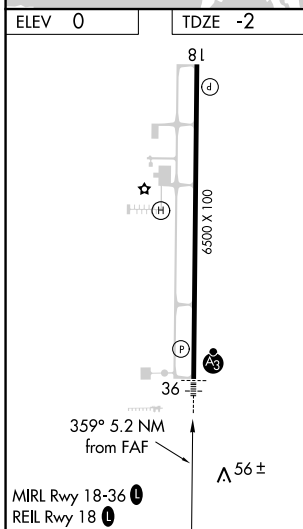
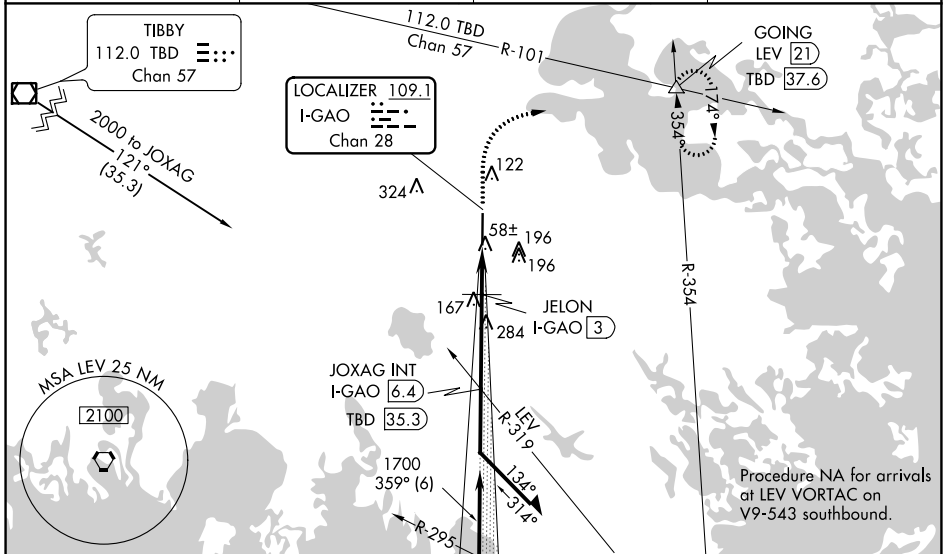
T

SSALR



MISSED APPROACH: Climb to 2000, then climbing right turn to 2000 on heading 050° and TBD VOR/DME R-101 to GOING INT/LEV 21 DME and hold.

AWOS-3PT 118.175	NEW ORLEANS APP CON 120.85 256.9	CLNC DEL 120.85	UNICOM 123.0 (CTAF) 0
----------------------------	--	---------------------------	---------------------------------



ELEV 0	TDZE -2				
1200	2000	TBD R-101	GOING	JOXAG INT I-GAO 6.4	Remain within 10 NM
↑	hdg 050°		△		
*LOC only.	*I-GAO 2.1	JELON I-GAO 3	1700	179°	2000
I-GAO 1.2			359°		
	620*		1700		GS 3.00° TCH 51
	0.9 NM	0.9 NM	3.4 NM		
CATEGORY	A	B	C	D	
S-ILS 36		198-1/2	200 (200-1/2)		
S-LOC 36		320-1/2	322 (400-1/2)		
CIRCLING	440-1 440 (500-1)	560-1 560 (600-1)	640-1 3/4 640 (700-1 3/4)	640-2 640 (700-2)	

SC-4, 09 SEP 2021 to 07 OCT 2021

SC-4, 09 SEP 2021 to 07 OCT 2021