

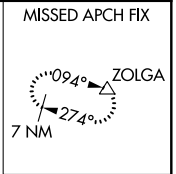
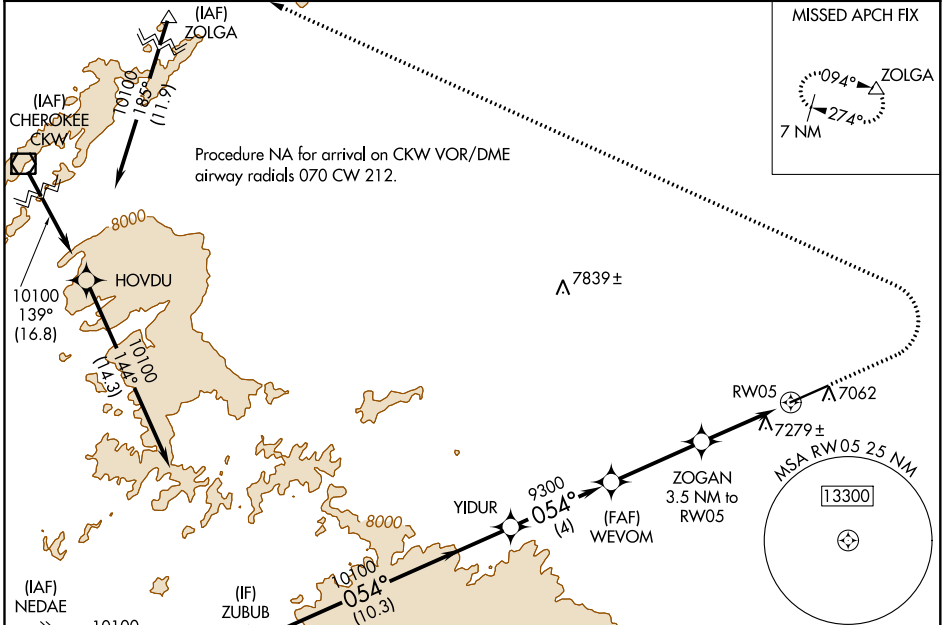
WAAS CH <b>65820</b> <b>W05A</b>	APP CRS <b>054°</b>	Rwy Idg TDZE Apt Elev	<b>8801</b> <b>7014</b> <b>7014</b>
----------------------------------------	------------------------	-----------------------------	-------------------------------------------

# RNAV (GPS) RWY 5

SHIVELY FIELD (SAA)

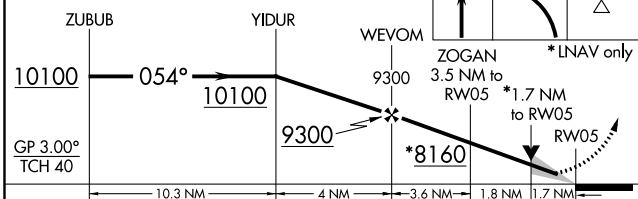
RNP APCH.	MISSED APPROACH: Climb to 7800 then climbing left turn to 11000 direct ZOLGA and hold.
<p>▼ For uncompensated Baro-VNAV systems, LNAV/VNAV NA below -28°C or above 54°C.</p>	

AWOS-3PT <b>118.175</b>	DENVER CENTER <b>132.1 254.35</b>	UNICOM <b>122.8 (CTAF) 0</b>
----------------------------	--------------------------------------	---------------------------------



(IAF) NEDAE 10100 077° (18.4)	(IF) ZUBUB 10100 054° (10.3)	9091	9439	ELEV 7014	TDZE 7014
----------------------------------------	---------------------------------------	------	------	-----------	-----------

VGSI and RNAV glidepath not coincident (VGSI Angle 3.00/TCH 49).



<p>GP 3.00° TCH 40</p> <p>10.3 NM   4 NM   3.6 NM   1.8 NM   1.7 NM</p>	<p>8801 X 100</p> <p>1.8% DOWN</p> <p>1.8% UP</p> <p>7058</p> <p>0.54° to RW05</p>																									
<table border="1"> <thead> <tr> <th>CATEGORY</th> <th>A</th> <th>B</th> <th>C</th> <th>D</th> </tr> </thead> <tbody> <tr> <td>LPV DA</td> <td colspan="2">7264-7/8</td> <td colspan="2">250 (300-7/8)</td> </tr> <tr> <td>LNAV/VNAV DA</td> <td colspan="2">7513-13/4</td> <td colspan="2">499 (500-13/4)</td> </tr> <tr> <td>LNAV MDA</td> <td colspan="2">7620-1 606 (700-1)</td> <td colspan="2">7620-13/4 606 (700-13/4)</td> </tr> <tr> <td>CIRCLING</td> <td colspan="2">7620-1 606 (700-1)</td> <td>7620-13/4 606 (700-13/4)</td> <td>7620-2 606 (700-2)</td> </tr> </tbody> </table>	CATEGORY	A	B	C	D	LPV DA	7264-7/8		250 (300-7/8)		LNAV/VNAV DA	7513-13/4		499 (500-13/4)		LNAV MDA	7620-1 606 (700-1)		7620-13/4 606 (700-13/4)		CIRCLING	7620-1 606 (700-1)		7620-13/4 606 (700-13/4)	7620-2 606 (700-2)	<p>REIL Rwy 5 and 23 0</p> <p>MIRL Rwy 5-23 0</p>
CATEGORY	A	B	C	D																						
LPV DA	7264-7/8		250 (300-7/8)																							
LNAV/VNAV DA	7513-13/4		499 (500-13/4)																							
LNAV MDA	7620-1 606 (700-1)		7620-13/4 606 (700-13/4)																							
CIRCLING	7620-1 606 (700-1)		7620-13/4 606 (700-13/4)	7620-2 606 (700-2)																						

NW-1, 09 SEP 2021 to 07 OCT 2021

NW-1, 09 SEP 2021 to 07 OCT 2021