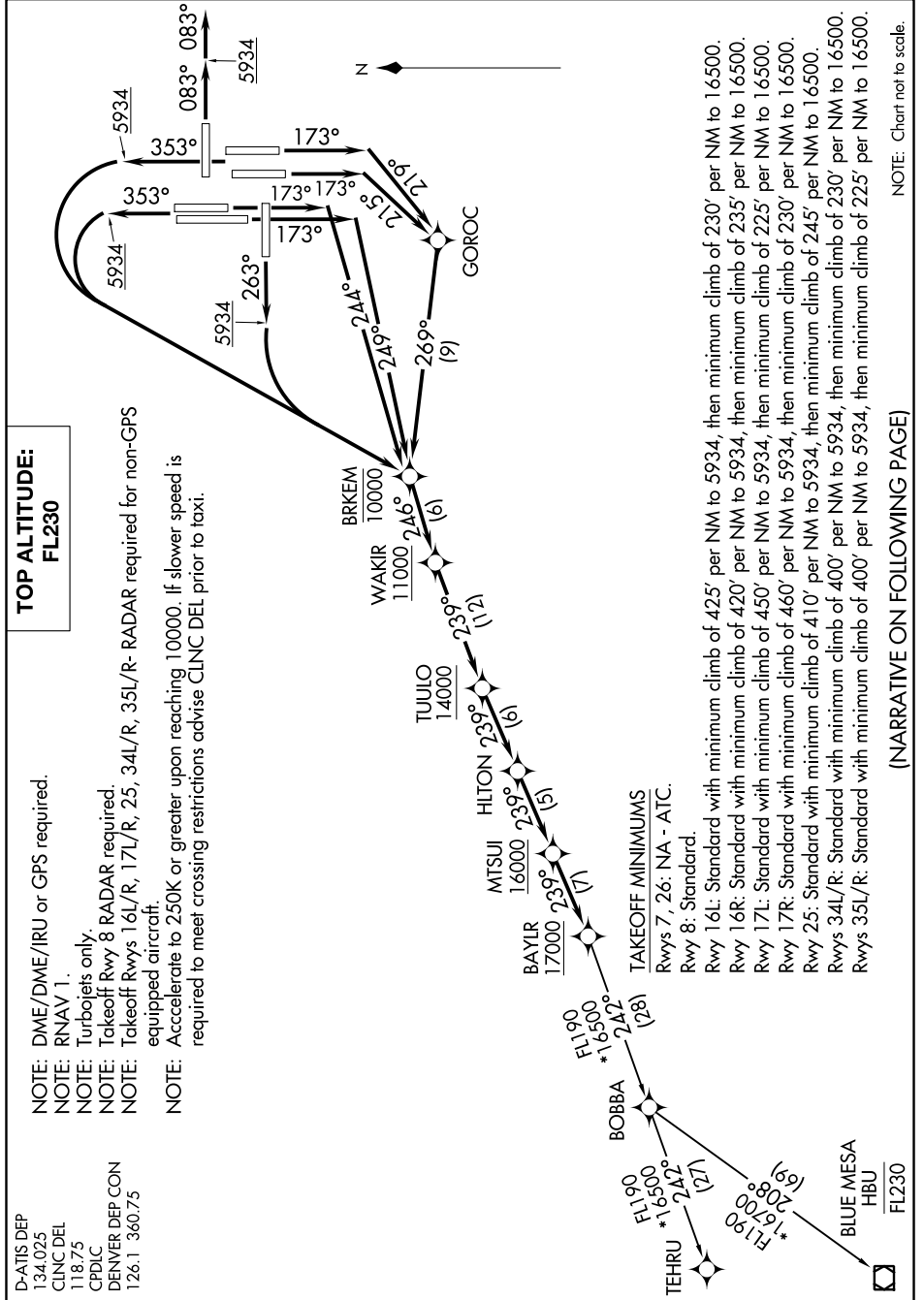


1200 UTC 09 SEP 2021 to 07 OCT 2021

**TOP ALTITUDE:
FL230**

- NOTE: DME/DME/IRU or GPS required.
- NOTE: RNAV 1.
- NOTE: Turbojets only.
- NOTE: Takeoff Rwy 8 RADAR required.
- NOTE: Takeoff Rwys 16L/R, 17L/R, 25, 34L/R, 35L/R- RADAR required for non-GPS equipped aircraft.
- NOTE: Accelerate to 250K or greater upon reaching 10000. If slower speed is required to meet crossing restrictions advise CLNC DEL prior to taxi.

D-ATIS DEP
134.025
CLNC DEL
118.75
CPDLC
DENVER DEP CON
126.1 360.75



NOTE: Chart not to scale.

(NARRATIVE ON FOLLOWING PAGE)

SW-1, 09 SEP 2021 to 07 OCT 2021