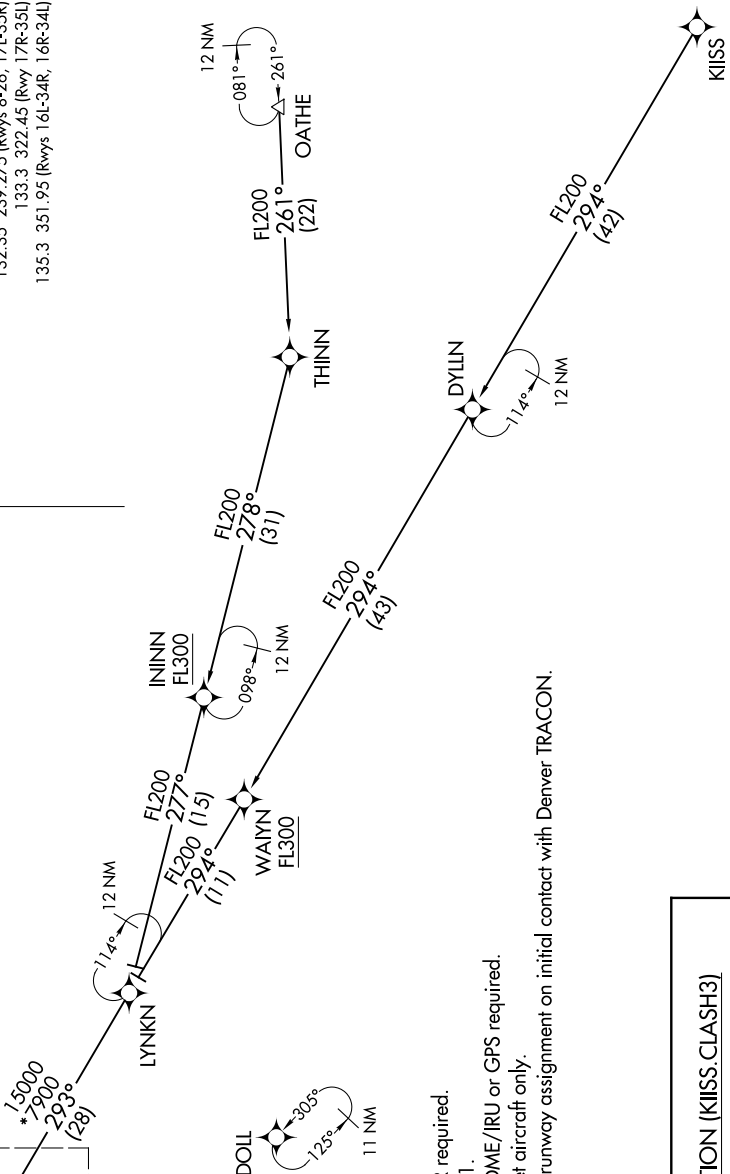
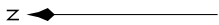


# CLASH THREE ARRIVAL (RNAV) Transition Routes

DENVER APP CON  
126.55 269.525  
D-ATS ARR  
125.6 379.9  
DENVER TOWER  
128.75 273.55 (Rwy 7-25)  
132.35 239.275 (Rwys 8-26, 17L-35R)  
133.3 322.45 (Rwy 17R-35L)  
135.3 351.95 (Rwys 16L-34R, 16R-34L)



- NOTE: RADAR required.
- NOTE: RNAV 1.
- NOTE: DME/DME/IRU or GPS required.
- NOTE: Turbojet aircraft only.
- NOTE: Expect runway assignment on initial contact with Denver TRACON.

**KIISS TRANSITION (KIISS.CLASH3)**  
**OATHE TRANSITION (OATHE.CLASH3)**

(CONTINUED ON FOLLOWING PAGE)

NOTE: Chart not to scale.

SW-1, 09 SEP 2021 to 07 OCT 2021

SW-1, 09 SEP 2021 to 07 OCT 2021

# CLASH THREE ARRIVAL (RNAV) Transition Routes