

# EEONS EIGHT DEPARTURE (RNAV)

AL-9077 (FAA)

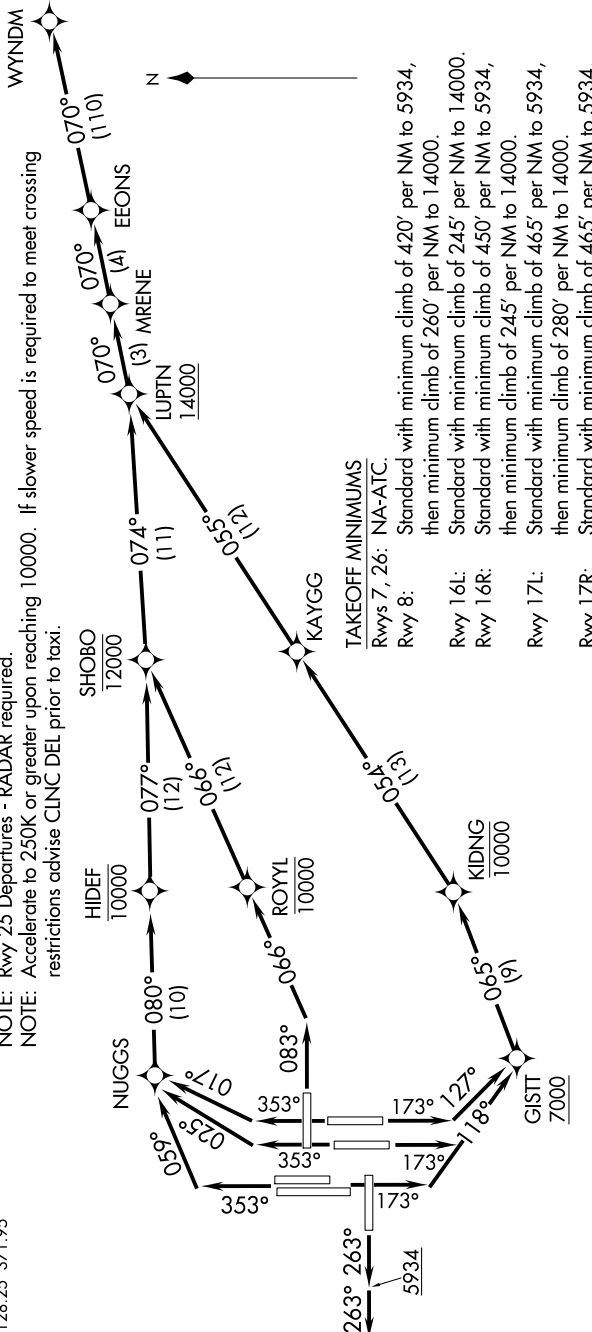
DENVER INTL (DEN)  
DENVER, COLORADO

120Z 100 70 01 120Z DES 60 1-1-MS

D-ATIS DEP  
134.025  
CLNC DEL  
118.75  
CPDLC  
DENVER DEP CON  
128.25 371.95

- NOTE: DME/DME/IRU or GPS required.
- NOTE: RNAV 1.
- NOTE: Turbojets only.
- NOTE: Takeoff Rwy 8, 16L/R, 17L/R, 34L/R, 35L/35R - RADAR required for non-GPS equipped aircraft.
- NOTE: Rwy 25 Departures - RADAR required.
- NOTE: Accelerate to 250K or greater upon reaching 10000. If slower speed is required to meet crossing restrictions advise CLNC DEL prior to taxi.

**TOP ALTITUDE:  
FL230**



(NARRATIVE ON FOLLOWING PAGE)

NOTE: Chart not to scale.

SW-1, 09 SEP 2021 to 07 OCT 2021

# EEONS EIGHT DEPARTURE (RNAV)