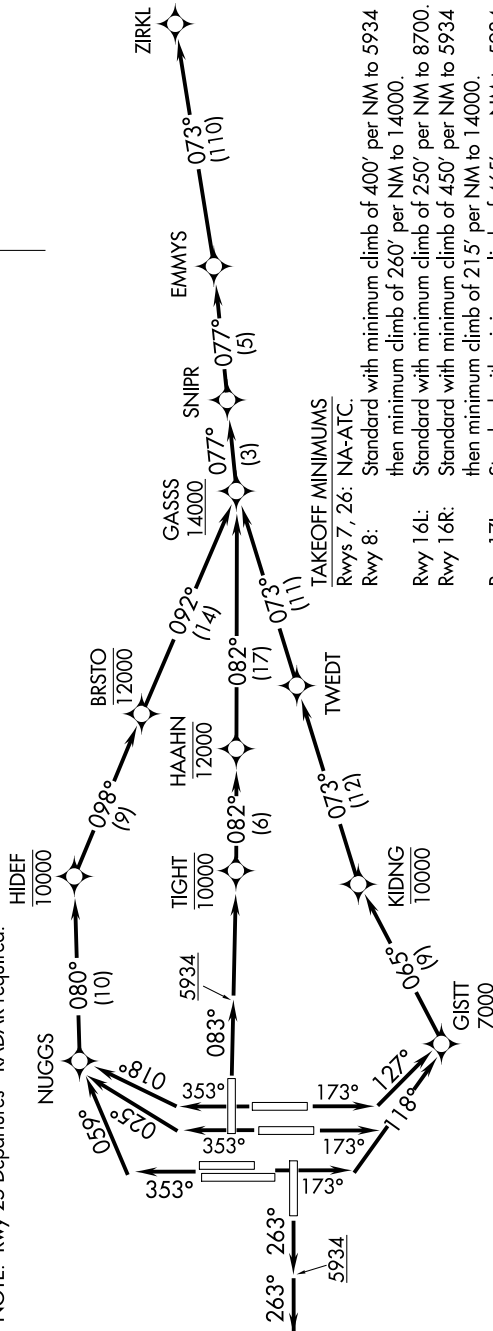


1200.T00.T0 to 1202 SEP 60 1L-WS

- NOTE: DME/DME/IRU or GPS required.
- NOTE: RNAV 1.
- NOTE: Turboprops only.
- NOTE: Takeoff Rwy 16L/R, 17L/R, 34L/R, 35L/R - RADAR required for non-GPS equipped aircraft.
- NOTE: Accelerate to 250K or greater upon reaching 10000. If slower speed is required to meet crossing restrictions advise CLNC DEL prior to taxi.
- NOTE: Rwy 25 Departures - RADAR required.

TOP ALTITUDE:  
FL230

D-AIIS DEP  
134.025  
CLNC DEL  
118.75  
CPDLC  
DENVER DEP CON  
128.25 371.95



(NARRATIVE ON FOLLOWING PAGE)

NOTE: Chart not to scale.