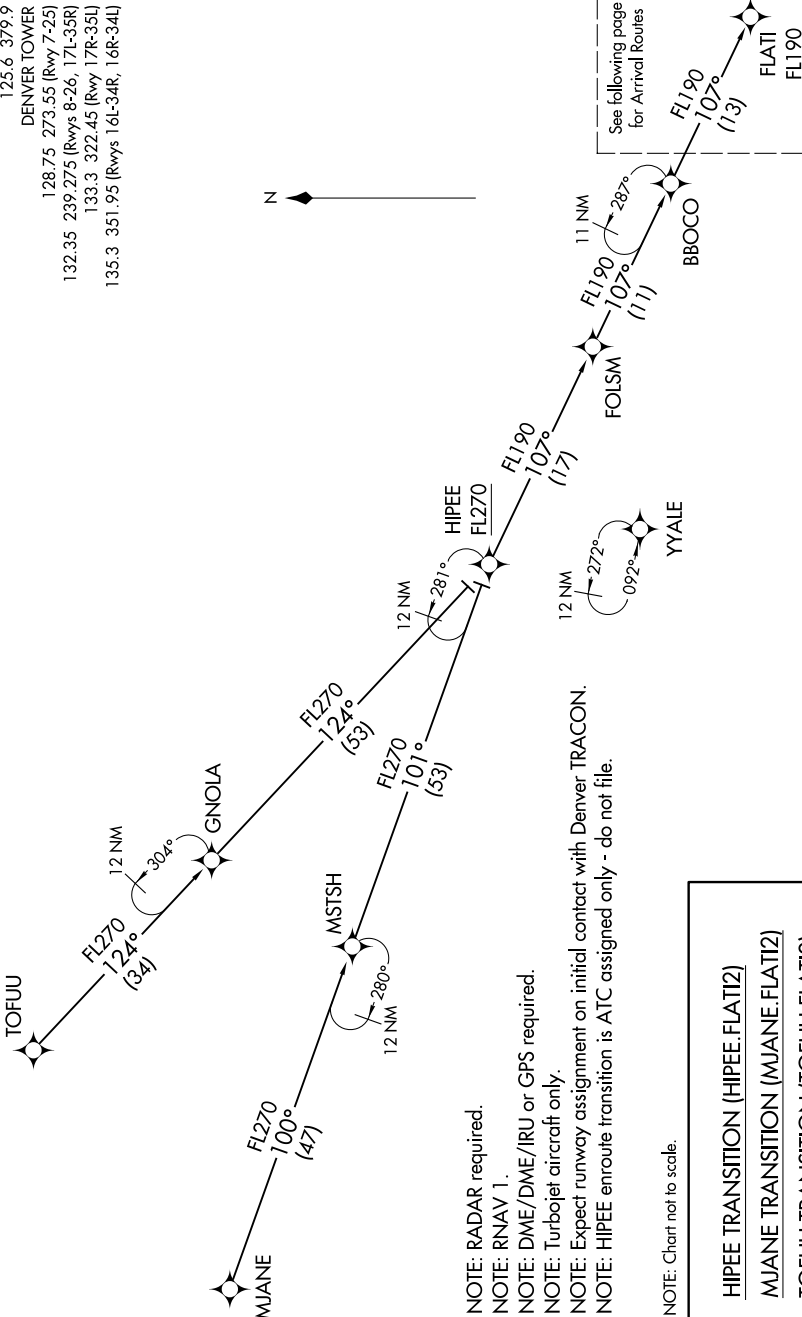


FLATI TWO ARRIVAL (RNAV) Transition Routes

SW-1, 09 SEP 2021 to 07 OCT 2021

DENVER APP CON
119.3 307.3
D-ATIS ARR
125.6 379.9
DENVER TOWER
128.75 273.55 (Rwy 7-25)
132.35 239.275 (Rwys 8-26, 17L-39R)
133.3 322.45 (Rwy 17R-35L)
135.3 351.95 (Rwys 16L-34R, 16R-34L)



See following page
for Arrival Routes

NOTE: RADAR required.
NOTE: RNAV 1.
NOTE: DME/DME/IRU or GPS required.
NOTE: Turbojet aircraft only.
NOTE: Expect runway assignment on initial contact with Denver TRACON.
NOTE: HIPEE enroute transition is ATC assigned only - do not file.

NOTE: Chart not to scale.

HIPEE TRANSITION (HIPEE.FLATI2)
MJANE TRANSITION (MJANE.FLATI2)
TOFUU TRANSITION (TOFUU.FLATI2)

(CONTINUED ON FOLLOWING PAGE)

FLATI TWO ARRIVAL (RNAV) Transition Routes

SW-1, 09 SEP 2021 to 07 OCT 2021