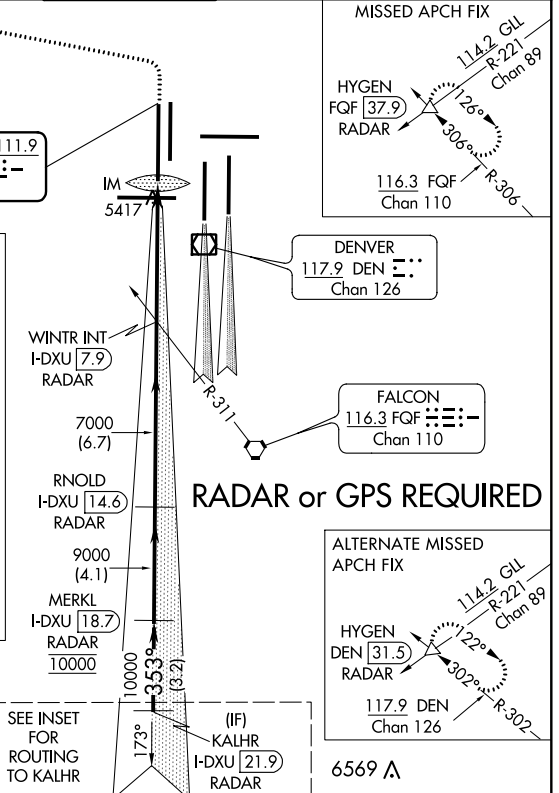
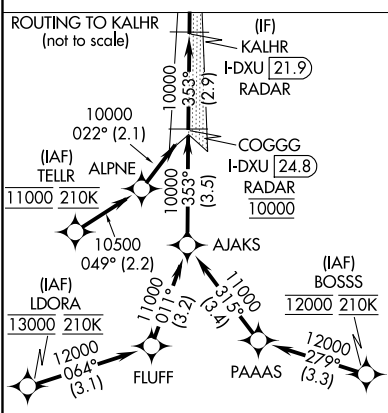
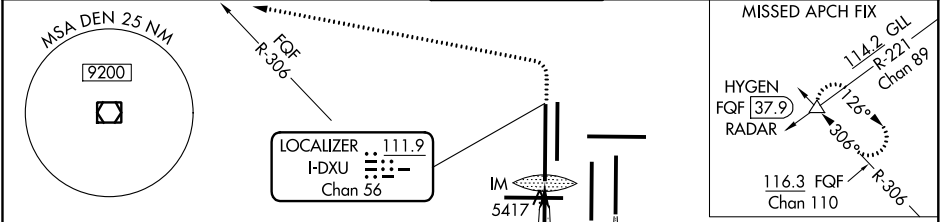


LOC/DME I-DXU <b>111.9</b> Chan <b>56</b>	APP CRS <b>353°</b>	Rwy Idg TDZE Apt Elev <b>16000</b> <b>5327</b> <b>5434</b>
---	------------------------	---

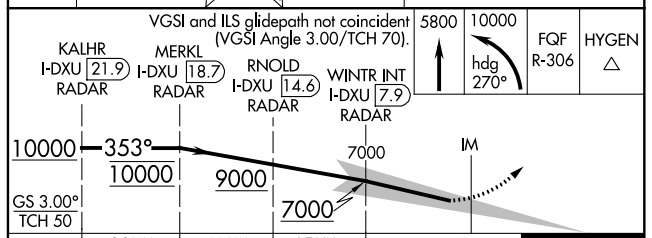
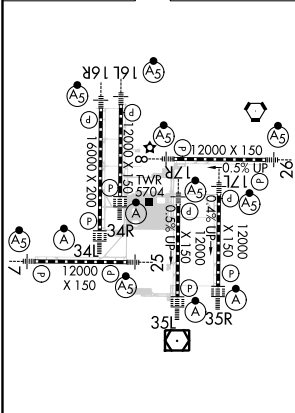
# ILS RWY 34L (SA CAT I)

DENVER INTL (DEN)

<b>▼</b> RADAR or DME required. Requires specific OPSPEC, MSPEC, or LOA approval and use of HUD to DH. Simultaneous approach authorized with Rwy 35L/R.		<b>ALSF-2</b> 	<b>MISSED APPROACH:</b> Climb to 5800 then climbing left turn to 10000 on heading 270° and on FQG VORTAC R-306 to HYGEN/FQG 37.9 DME/RADAR and hold.		
<b>D-ATIS</b> ARR <b>125.6 379.9</b> DEP <b>134.025</b>	<b>DENVER APP CON</b> <b>119.3 307.3 120.35 379.3</b> (NORTH) (SOUTH)	<b>DENVER TOWER</b> <b>135.3 351.95</b>	<b>GND CON</b> <b>127.5 379.175</b>	<b>CLNC DEL</b> <b>118.75</b>	<b>CPDLC</b>



ELEV 5434	<b>D</b>	TDZE 5327
-----------	----------	-----------



CATEGORY	A	B	C	D
S-ILS 34L	RA 148/14 150 DA 5477			
<b>SA CATEGORY I ILS - SPECIAL AIRCREW &amp; AIRCRAFT CERTIFICATION REQUIRED</b>				

SW-1, 09 SEP 2021 to 07 OCT 2021

SW-1, 09 SEP 2021 to 07 OCT 2021