

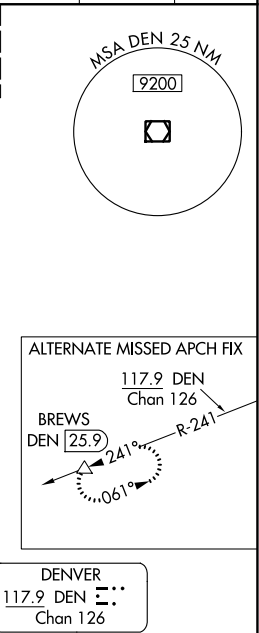
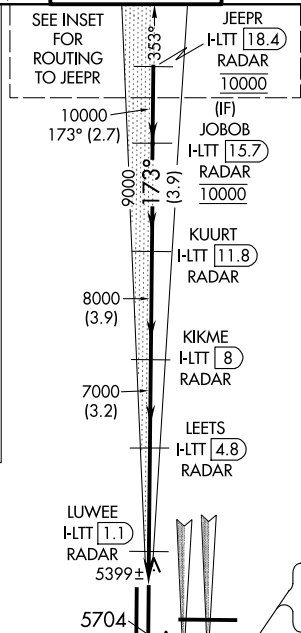
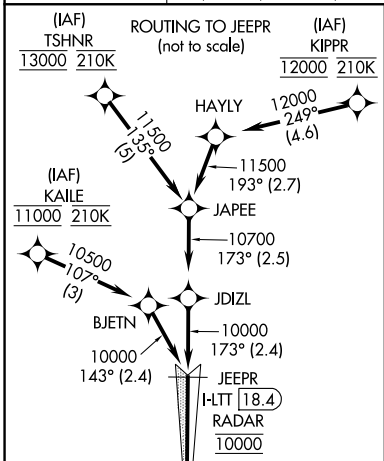
LOC/DME I-LTT <b>111.1</b> Chan 48	APP CRS <b>173°</b>	Rwy Idg TDZE Apt Elev	<b>12000</b> <b>5357</b> <b>5434</b>
--	------------------------	-----------------------------	--

# ILS or LOC RWY 16L

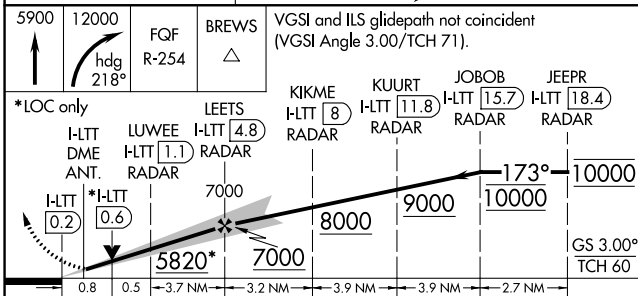
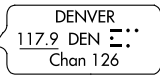
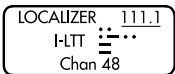
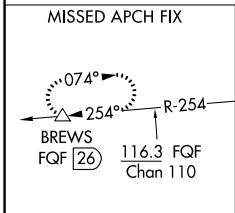
DENVER INTL (DEN)

Simultaneous approach authorized with Rwy 17L/17R. DME required. S-LOC 16L DME or RADAR required. For inoperative MALS, increase S-LOC Cat C/D visibility to RVR 4500.

D-ATIS ARR <b>125.6 379.9</b> DEP <b>134.025</b>	DENVER APP CON <b>119.3 307.3 120.35 379.3</b> (NORTH) (SOUTH)	DENVER TOWER <b>135.3 351.95</b>	GND CON <b>127.5 379.175</b>	CLNC DEL <b>118.75</b>	CPDLC
--	--	-------------------------------------	---------------------------------	---------------------------	-------



## RADAR or GPS REQUIRED



ELEV 5434	TDZE 5357
-----------	-----------

173° 5 NM from FAF

FAF to MAP 5 NM

Knots	60	90	120	150	180
Min:Sec	5:00	3:20	2:30	2:00	1:40

TDZ/CL Rwy 7, 16L, 16R, 17R, 26, 34L, 34R, 35L, 35R

HIRL all Rwy

CATEGORY	A	B	C	D
S-ILS 16L	5557/18 200 (200-½)			
S-LOC 16L	5660/24 303 (300-½)			

SW-1, 09 SEP 2021 to 07 OCT 2021

SW-1, 09 SEP 2021 to 07 OCT 2021