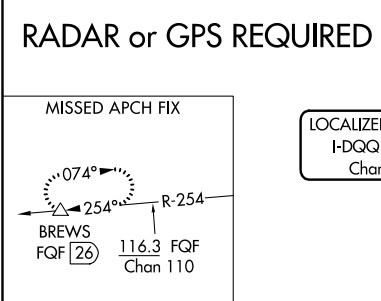
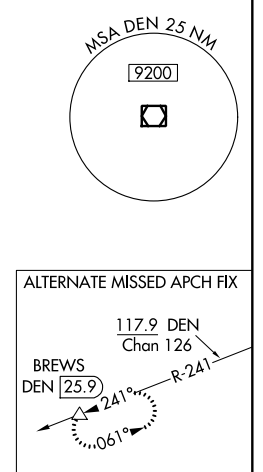
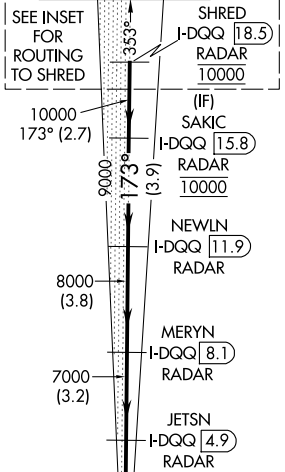
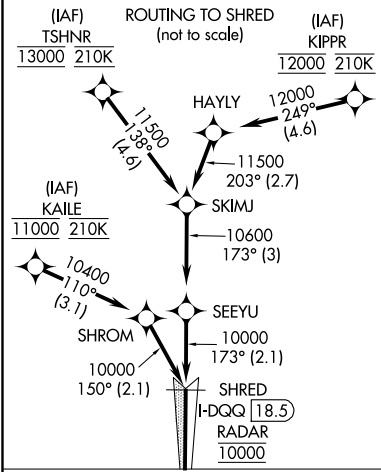


LOC/DME I-DQIQ 111.9 Chan 56	APP CRS 173°	Rwy Idg 16000 TDZE 5326 Apt Elev 5434
--	------------------------	--

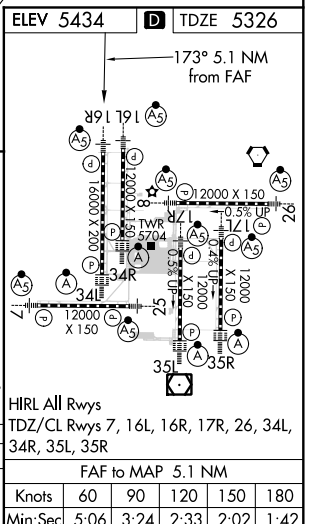
ILS or LOC RWY 16R

DENVER INTL (DEN)

<p>▼ For inoperative MALSR, increase S-LOC Cat C/D visibility to RVR 4500. Simultaneous approach authorized with Rwy 17L and 17R. DME required.</p>	<p>MALSR </p>	<p>MISSED APPROACH: Climb to 5900 then climbing right turn to 12000 on heading 218° and on FGF VORTAC R-254 to BREWS/FQF 26 DME and hold.</p>			
<p>D-ATIS ARR 125.6 379.9 DEF 134.025</p>	<p>DENVER APP CON 119.3 307.3 120.35 379.3 (NORTH) (SOUTH)</p>	<p>DENVER TOWER 135.3 351.95</p>	<p>GND CON 127.5 379.175</p>	<p>CLNC DEL 118.75</p>	<p>CPDLC</p>



5900	12000	FQF R-254	BREWS △	VGSI and ILS glidepath not coincident (VGSI Angle 3.00/TCH 71).
*LOC only				
JETSN I-DQIQ 4.9 RADAR		MERYN I-DQIQ 8.1 RADAR	NEWLN I-DQIQ 11.9 RADAR	SAKIC I-DQIQ 15.8 RADAR
*I-DQIQ 0.6		7000	8000	9000
7000		8000	9000	10000
0.8		4.3 NM	3.2 NM	3.8 NM
3.8 NM		3.9 NM	2.7 NM	
CATEGORY	A	B	C	D
S-ILS 16R	5526/18 200 (100-½)			
S-LOC 16R	5640/24 314 (300-½)			



SW-1, 09 SEP 2021 to 07 OCT 2021

SW-1, 09 SEP 2021 to 07 OCT 2021