

LOC/DME I-AQD <b>108.5</b> Chan <b>22</b>	APP CRS <b>353°</b>	Rwy Idg <b>12000</b> TDZE <b>5434</b> Apt Elev <b>5434</b>
---	------------------------	--

# ILS or LOC RWY 35L

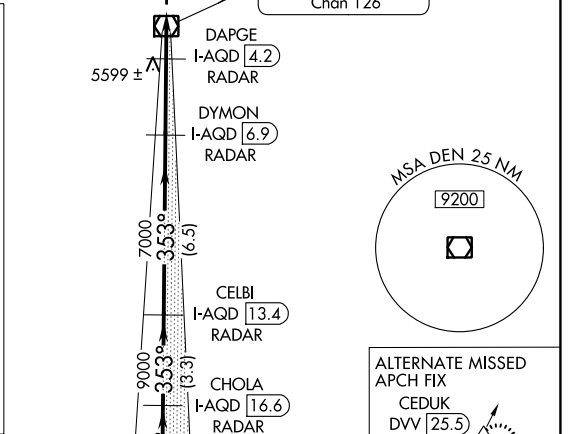
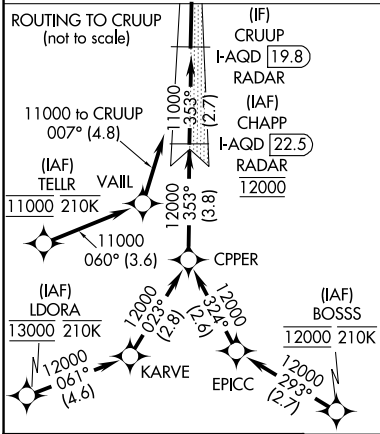
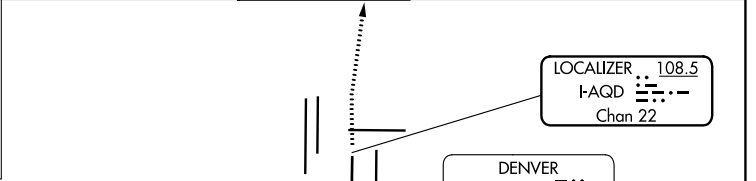
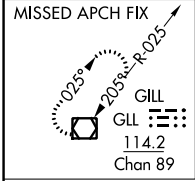
DENVER INTL (DEN)

DME or RADAR required for LOC only.  
RNAV 1-GPS or RADAR required for procedure entry.

**ALSF-2**  
MISSED APPROACH: Climb to 10000 then right turn direct GLL VOR/DME and hold.

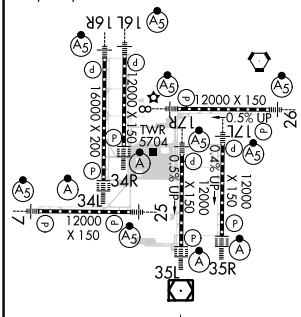
**Simultaneous approach authorized.**

D-ATIS ARR <b>125.6 379.9</b> DEP <b>134.025</b>	DENVER APP CON <b>119.3 307.3 120.35 379.3</b> (NORTH) (SOUTH)	DENVER TOWER <b>133.3 322.45</b>	GND CON <b>121.85 377.1</b>	CLNC DEL <b>118.75</b>	CPDLC
--	--	-------------------------------------	--------------------------------	---------------------------	-------



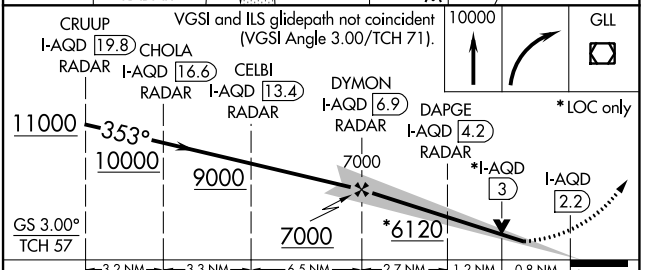
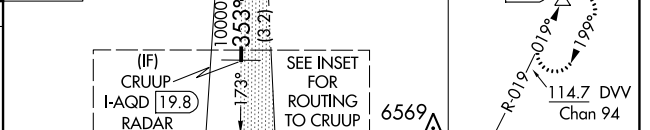
ELEV 5434 TDZE 5434

HIRL all Rwys  
TDZ/CL Rwys 7, 16L, 16R, 17R, 26, 34L, 34R, 35L, 35R



FAF to MAP 4.7 NM

Knots	60	90	120	150	180
Min:Sec	4:42	3:08	2:21	1:53	1:34



CATEGORY	A	B	C	D
S-ILS 35L	5634/18 200 (200-½)			
S-LOC 35L	5760/24	326 (400-½)	5760/26	326 (400-½)

SW-1, 09 SEP 2021 to 07 OCT 2021

SW-1, 09 SEP 2021 to 07 OCT 2021