

WAAS CH <b>99307</b> <b>W16A</b>	APP CRS <b>173°</b>	Rwy Idg <b>12000</b> TDZE <b>5357</b> Apt Elev <b>5434</b>
--	------------------------	--

# RNAV (GPS) Y RWY 16L

DENVER INTL (DEN)

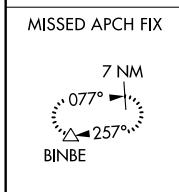
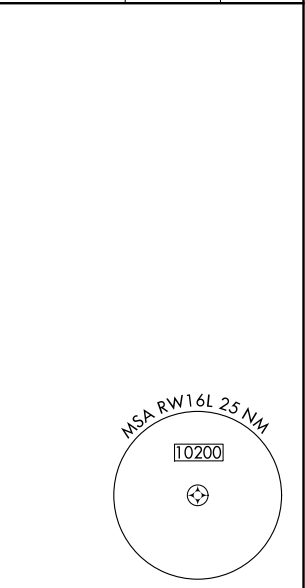
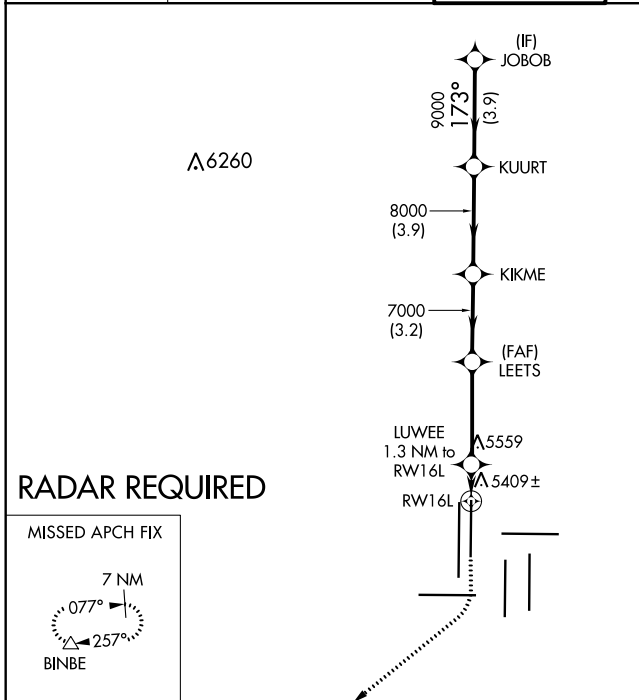
**▽** For uncompensated Baro-VNAV systems, LNAV/VNAV NA below -25°C (-13°F) or above 45°C (114°F). Simultaneous approach authorized with Rwy 17 L/R. DME/DME RNP -0.3 NA. LNAV procedure NA during simultaneous operations. For inoperative MALSR, increase LNAV/VNAV all Cats, and LNAV Cats C/D visibility to RVR 4500. Use of FD or AP providing RNAV track guidance required during simultaneous operations.

MALSR

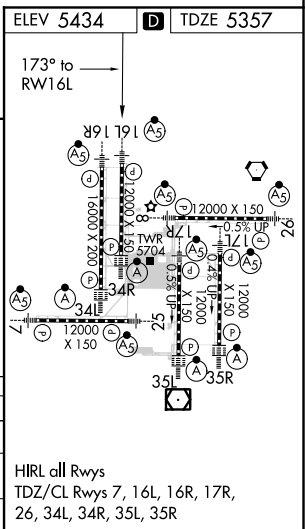


MISSED APPROACH: Climb to 5900 then climbing right turn to 10000 direct BINBE and hold, continue climb-in-hold to 10000.

D-ATIS ARR <b>125.6 379.9</b> DEP <b>134.025</b>	DENVER APP CON <b>119.3 307.3 120.35 379.3</b> (NORTH) (SOUTH)	DENVER TOWER <b>135.3 351.95</b>	GND CON <b>127.5 379.175</b>	CLNC DEL <b>118.75</b>	CPDLC
--	--	-------------------------------------	---------------------------------	---------------------------	-------



5900	10000	BINBE	VGSI and RNAV glidepath not coincident (VGSI Angle 3.00/TCH 71).				JOBO
*LNAV only	LUTWEE 1.3 NM to RWY16L	LEETS	KIKME	KUURT	10000		
	*0.8 NM to RWY16L	7000	8000	9000	173°	GP 3.00° TCH 60	
		5820*	7000				
	0.8	0.5	3.7 NM	3.2 NM	3.9 NM	3.9 NM	
CATEGORY	A	B	C	D			
LPV DA		5557/18	200 (200-½)				
LNAV/VNAV DA		5647/24	290 (300-½)				
LNAV MDA		5660/24	303 (300-½)				



HIRL all Rwys  
TDZ/CL Rwys 7, 16L, 16R, 17R,  
26, 34L, 34R, 35L, 35R

SW-1, 09 SEP 2021 to 07 OCT 2021

SW-1, 09 SEP 2021 to 07 OCT 2021