

WAAS CH 45619 W34A	APP CRS 353°	Rwy Idg 16000 TDZE 5327 Apt Elev 5434
--	------------------------	--

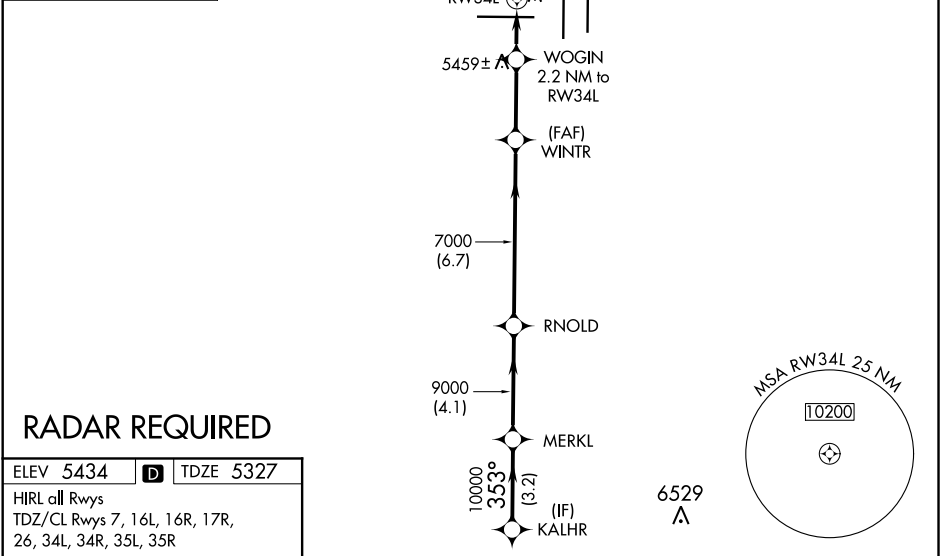
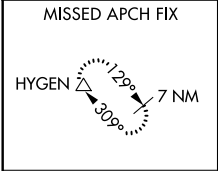
RNAV (GPS) Y RWY 34L

DENVER INTL (DEN)

▼ For uncompensated Baro-VNAV systems, LNAV/VNAV NA below -25°C (-13°F) or above 48°C (118°F). DME/DME RNP-0.3 NA. LNAV procedure NA during simultaneous operations. Simultaneous approach authorized with Rwy 35L/R. Use of FD or AP providing RNAV track guidance during simultaneous operations.

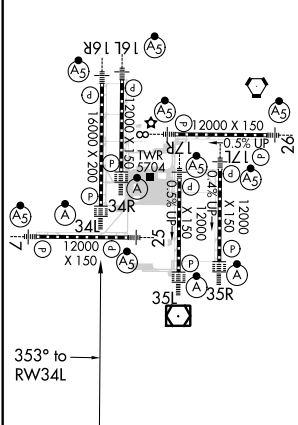
ALSF-2 MISSED APPROACH: Climb to 5900 then climbing left turn to 10000 direct HYGEM and hold.

D-ATIS ARR 125.6 379.9 DEP 134.025	DENVER APP CON 119.3 307.3 (NORTH) 120.35 379.3 (SOUTH)	DENVER TOWER 135.3 351.95	GND CON 127.5 379.175	CLNC DEL 118.75	CPDLC
--	---	-------------------------------------	---------------------------------	---------------------------	-------



RADAR REQUIRED

ELEV 5434	D	TDZE 5327
HIRL all Rwys TDZ/CL Rwys 7, 16L, 16R, 17R, 26, 34L, 34R, 35L, 35R		



KALHR		MERKL	RNOLD	WINTR	WOGIN	5900	10000	HYGEM
10000		353°	10000	9000	7000	↑	↙	△
GP 3.00° TCH 50								
3.2 NM		4.1 NM	6.7 NM	2.9 NM	1.2 NM	*1 NM to RWY34L		
CATEGORY	A	B	C	D				
LPV DA	DA	5527/18		200 (100-½)				
LNAV/VNAV DA	DA	5660/30		333 (300-⅝)				
LNAV MDA	5720/24	393 (300-½)		5720/35		393 (300-⅝)		

SW-1, 09 SEP 2021 to 07 OCT 2021

SW-1, 09 SEP 2021 to 07 OCT 2021