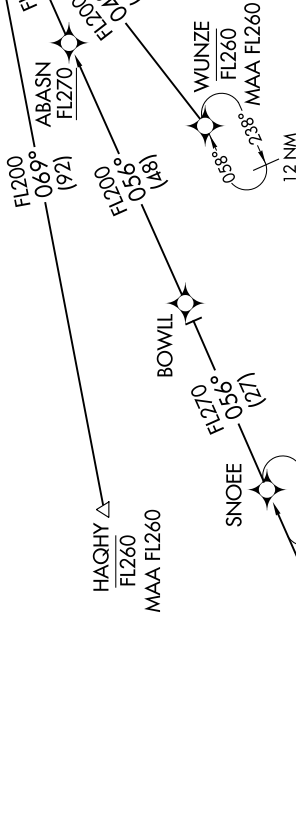
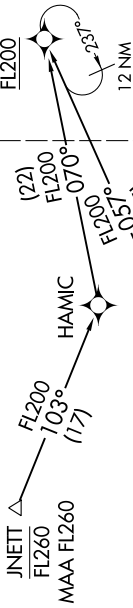
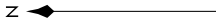


SSKII TWO ARRIVAL(RNAV) Transition Routes

SW-1, 09 SEP 2021 to 07 OCT 2021

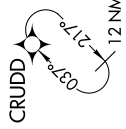
- DENVER APP CON
120.35 379.3
- D-ATIS ARR
125.6 379.9
- DENVER TOWER
128.75 273.55 (Rwy 7-25)
- 132.35 239.275 (Rwys 8-26, 17L-35R)
- 133.3 322.45 (Rwy 17R-35L)
- 135.3 351.95 (Rwys 16L-34R, 16R-34L)



See following page for arrival routes

- NOTE: RADAR required.
- NOTE: RNAV 1.
- NOTE: DME/DME/IRU or GPS required.
- NOTE: Turbojet aircraft only.
- NOTE: Expect runway assignment on initial contact with Denver TRACON.
- NOTE: BOWLL enroute transition is ATC assigned only-do not file.

- BOWLL TRANSITION (BOWLL.SSKII2)
- BUMMP TRANSITION (BUMMP.SSKII2)
- HAGHY TRANSITION (HAGHY.SSKII2)
- JNETT TRANSITION (JNETT.SSKII2)
- WUNZE TRANSITION (WUNZE.SSKII2)



NOTE: Chart not to scale.

(CONTINUED ON FOLLOWING PAGE)

SSKII TWO ARRIVAL(RNAV) Transition Routes

SW-1, 09 SEP 2021 to 07 OCT 2021