

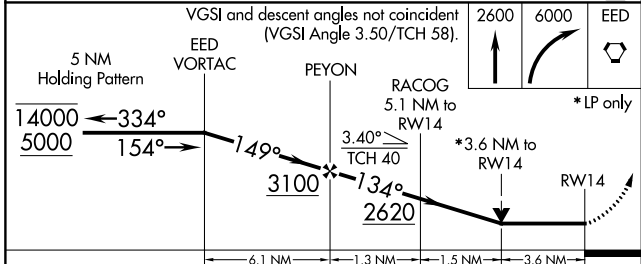
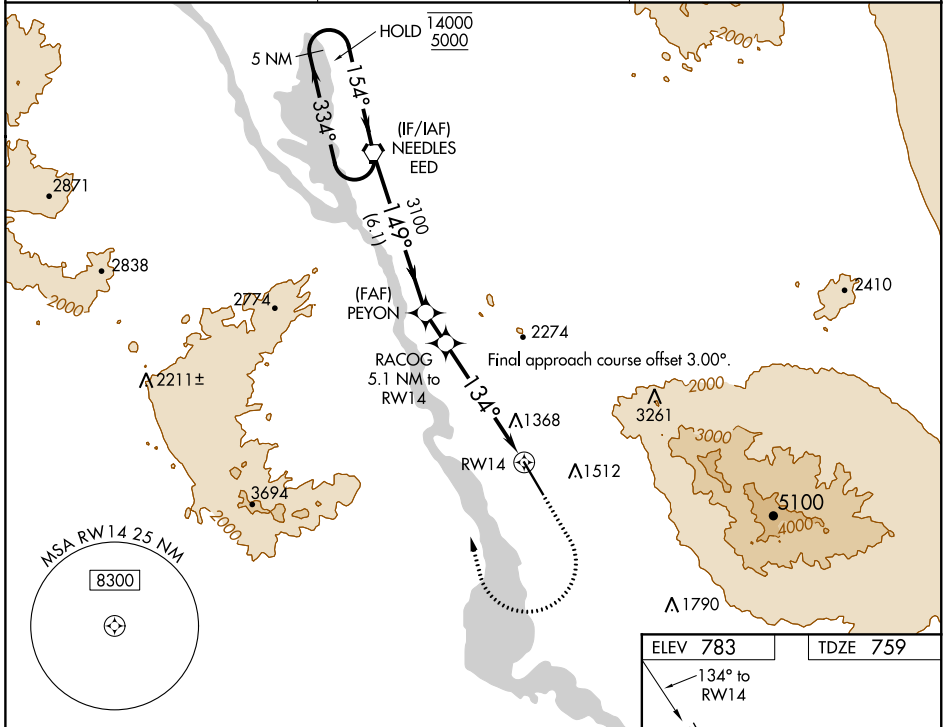
WAAS CH 53330 W14A	APP CRS 134°	Rwy Idg TDZE Apt Elev	8000 759 783
--	------------------------	-----------------------------	---

RNAV (GPS) RWY 14

LAKE HAVASU CITY (HII)

RNP APCH.	MISSED APPROACH: (Do not exceed 240K until EED VORTAC) Climb to 2600 then climbing right turn to 6000 direct EED VORTAC and hold, continue climb-in-hold to 6000.
<p>▼ Circling NA northeast of Rwy 14-32. ▲ Rwy 14 helicopter visibility reduction below ¾ SM NA.</p>	

AWOS-3 119.025	LOS ANGELES CENTER 134.65 360.65	UNICOM 122.7 (CTAF) 0
--------------------------	--	---------------------------------



ELEV 783	TDZE 759
<p>134° to RW14</p> <p>0.6% UP</p> <p>8000 X 100</p>	
<p>REIL Rwy 14 and 32 0</p> <p>MIRL Rwy 14-32 0</p>	

CATEGORY	A	B	C	D
LP MDA	2140-1¼ 1381 (1400-1¼)	2140-1½ 1381 (1400-1½)	2140-3	1381 (1400-3)
LNNAV MDA	2320-1¼ 1561 (1600-1¼)	2320-1½ 1561 (1600-1½)	2320-3	1561 (1600-3)
CIRCLING	2320-1¼ 1537 (1600-1¼)	2320-1½ 1537 (1600-1½)	2320-3	1537 (1600-3)

SW-4, 09 SEP 2021 to 07 OCT 2021

SW-4, 09 SEP 2021 to 07 OCT 2021