

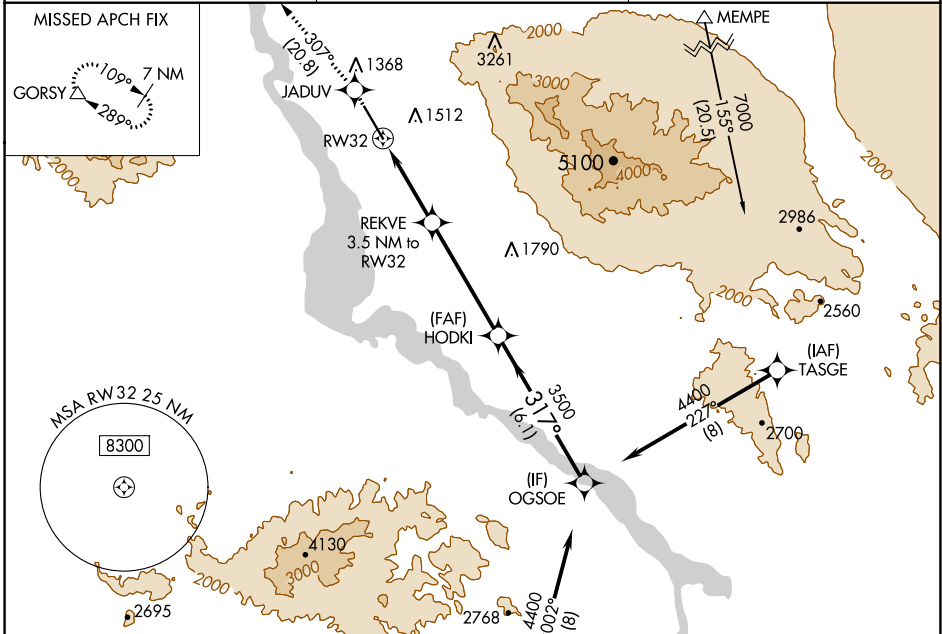
WAAS CH <b>49110</b> <b>W32A</b>	APP CRS <b>317°</b>	Rwy Idg TDZE Apt Elev	<b>8000</b> <b>783</b> <b>783</b>
--	------------------------	-----------------------------	---

# RNAV (GPS) RWY 32

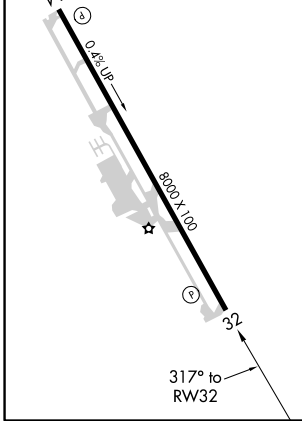
LAKE HAVASU CITY (HII)

RNP APCH.	<p>⚠ Circling NA northeast of Rwy 14-32. ⚠ Rwy 32 helicopter visibility reduction below ¾ SM NA.</p>	<p>MISSED APPROACH: Climb to 6300 direct JADUV and track 307° to GORSY and hold, continue climb-in-hold to 6300.</p>
-----------	--	--

AWOS-3 <b>119.025</b>	LOS ANGELES CENTER <b>134.65 360.65</b>	UNICOM <b>122.7 (CTAF) 0</b>
--------------------------	--	---------------------------------



ELEV 783	TDZE 783
REIL Rws 14 and 32	MIRL Rwy 14-32



6300	JADUV	tr 307°	GORSY	VGSI and RNAV glidepath not coincident (VGSI Angle 3.00/TCH 36).
*LNAV only.			REKVE 3.5 NM to RW32	HODKI 3500
			*2.6 NM to RW32	OGSOE 4400
			1940*	GP 3.00° TCH 50
	-2.6 NM	0.9	4.7 NM	6.1 NM

CATEGORY	A	B	C	D
LPV DA	1265-1⅓ 482 (500-1⅓)			
LNAV MDA	1660-1 877 (900-1)	1660-1¼ 877 (900-1¼)	1660-2½ 877 (900-2½)	877 (900-2½)
CIRCLING	1660-1¼ 877 (900-1¼)	1800-3 1017 (1100-3)	2180-3 1397 (1400-3)	

SW-4, 09 SEP 2021 to 07 OCT 2021

SW-4, 09 SEP 2021 to 07 OCT 2021