

WAAS CH <b>57938</b> <b>W35A</b>	APP CRS <b>346°</b>	Rwy Idg TDZE <b>538</b> Apt Elev <b>538</b>	<b>3651</b> <b>538</b> <b>538</b>
--	------------------------	---	---

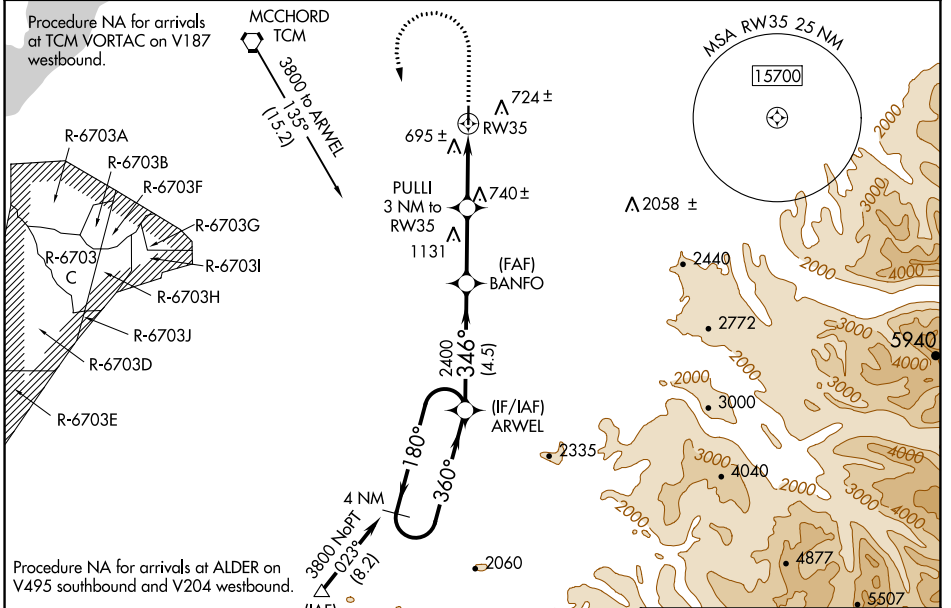
# RNAV (GPS) RWY 35

PIERCE COUNTY-THUN FLD (PLU)

▼ For uncompensated Baro-VNAV systems, LNAV/VNAV NA below -16°C (4°F) or above 54°C (130°F). DME/DME RNP-0.3 NA. Helicopter visibility reduction below ¾ SM NA. Baro-VNAV and VDP NA with McChord Fld altimeter setting. When local altimeter not received, use McChord Fld altimeter setting and increase all DA 49 feet and increase LPV and LNAV/VNAV visibilities ¼ mile; increase all MDA 60 feet.

MISSED APPROACH: Climb to 1900 then climbing left turn to 3800 direct ARWEL and hold.

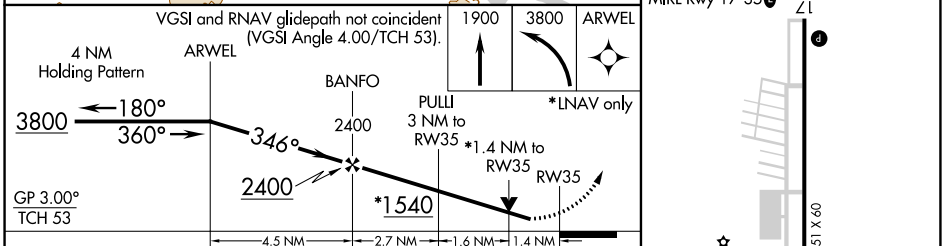
AWOS-3 <b>128.575</b>	SEATTLE APP CON <b>126.5 377.15</b>	CLNC DEL <b>121.85</b>	UNICOM <b>122.7 (CTAF) 0</b>
--------------------------	--	---------------------------	---------------------------------



NW-1, 09 SEP 2021 to 07 OCT 2021

NW-1, 09 SEP 2021 to 07 OCT 2021

ELEV 538	TDZE 538
REIL Rwy 17 and 35	MIRL Rwy 17-35



CATEGORY	A	B	C	D
LPV DA	877-1 1/8	339 (400-1 1/8)		NA
LNAV/VNAV DA	990-1 1/2	452 (500-1 1/2)		NA
LNAV MDA	1000-1	462 (500-1)		NA
CIRCLING	1080-1	542 (600-1)		NA

