

WAAS CH <b>42506</b> <b>W05A</b>	APP CRS <b>051°</b>	Rwy Idg TDZE Apt Elev	<b>5001</b> <b>235</b> <b>236</b>
--	------------------------	-----------------------------	---

# RNAV (GPS) RWY 5

COOK COUNTY (15J)

RNP APCH.

**⚠** Baro-VNAV NA. Use Moultrie altimeter setting; when not received, use Valdosta Rgnl altimeter setting and increase all DA 7 feet and all MDA 20 feet.

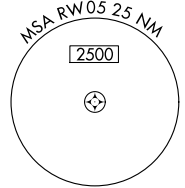
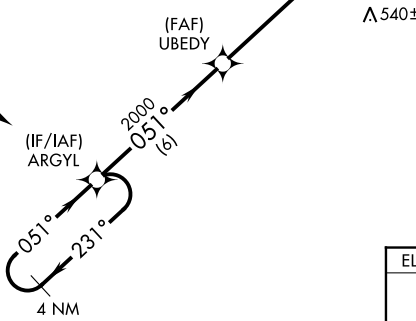
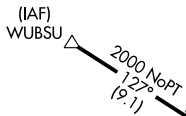
MISSED APPROACH: Climb to 3000 direct ZASIT and on track 016° to IBEBE and hold.

MGR AWOS-3PT  
**118.925**

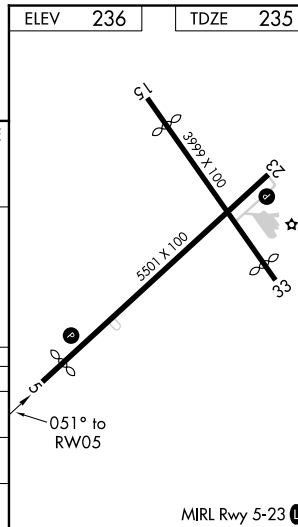
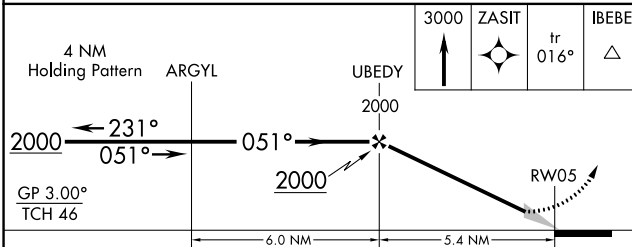
VALDOSTA APP CON\*  
**126.6 285.6**

UNICOM  
**122.8 (CTAF) 0**

Procedure NA for arrivals at WUBSU on V537 northbound.



ELEV	236	TDZE	235
------	-----	------	-----



CATEGORY	A	B	C	D
LPV DA	536-1 301 (300-1)			
LNAV/VNAV DA	720-1 485 (500-1)			
LNAV MDA	840-1	605 (700-1)	840-1 3/4	605 (700-1 3/4)

SE-4, 09 SEP 2021 to 07 OCT 2021

SE-4, 09 SEP 2021 to 07 OCT 2021