

VORTAC CVA 113.8 Chan 85	APP CRS 036°	Rwy Idg TDZE Apt Elev	N/A N/A 616
--	------------------------	-----------------------------	--

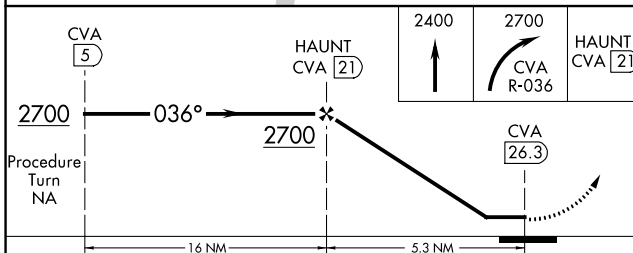
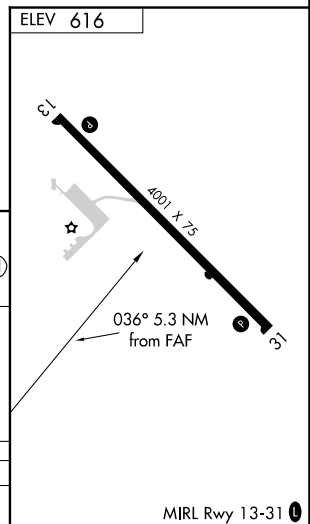
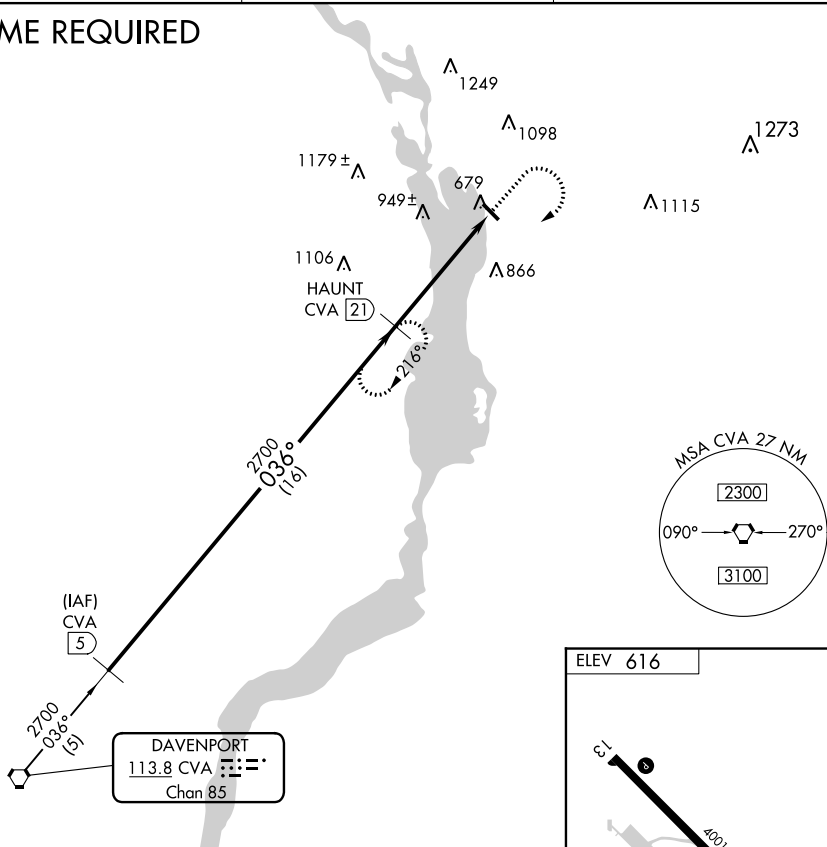
VOR-A
TRI-TOWNSHIP (SF'Y)

NA When local altimeter setting not received, use Sterling/Rockfalls alimeter setting and increase all MDA 80 feet. Procedure NA at night. Rwy 13, 31 helicopter visibility reduction below 1 SM NA. DME required.

MISSED APPROACH: Climb to 2400 then climbing right turn to 2700 on CVA VORTAC R-036 to HAUNT and hold.

AWOS-3PT 118.650	QUAD CITY APP CON* 125.95 257.8	UNICOM 122.7 (CTAF)
----------------------------	---	-------------------------------

DME REQUIRED



CATEGORY	A	B	C	D
CIRCLING	1300-1 684 (700-1)	1300-1¼ 684 (700-1¼)	NA	

EC-3, 09 SEP 2021 to 07 OCT 2021

EC-3, 09 SEP 2021 to 07 OCT 2021