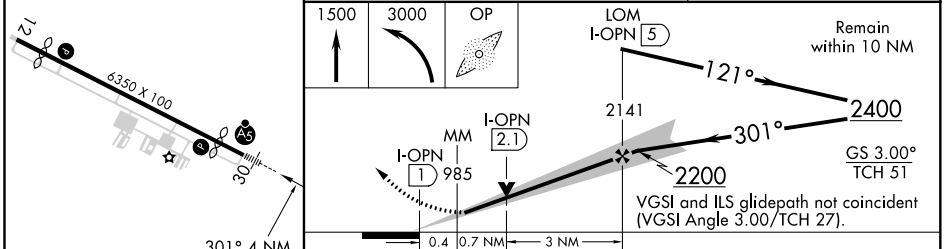
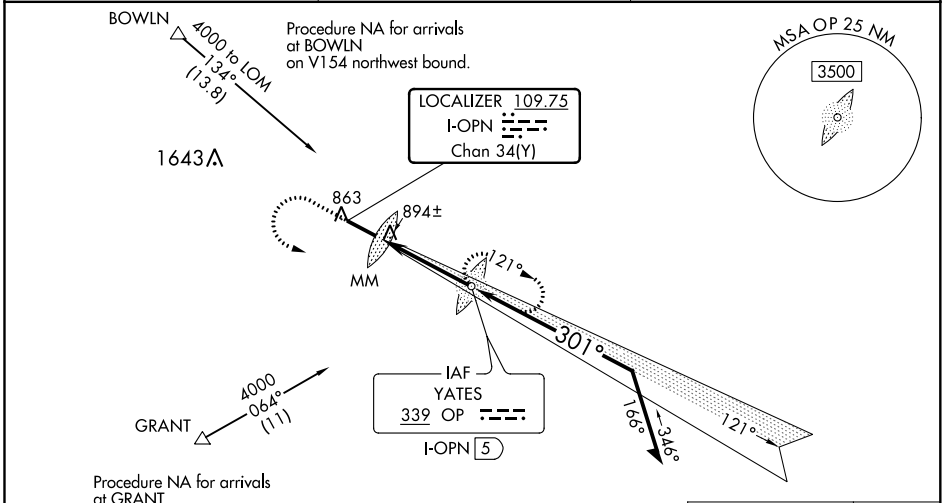


LOC/DME I-OPN 109.75 Chan 34 (Y)	APP CRS 301°	Rwy Idg 4962 TDZE 796 Apt Elev 798
--	------------------------	---

ILS or LOC RWY 30

THOMASTON-UPSON COUNTY (OPN)

ADF required. When local altimeter setting not received, use Atlanta Rgnl Falcon Fld altimeter setting and increase DA to 1064 feet; increase all MDAs 80 feet and S-LOC 30 Cats C/D and Circling Cat D visibility ¼ SM. For inop ALS, increase S-LOC 30 Cat C/D visibility to 1 SM. For inop ALS when using Atlanta Rgnl Falcon Fld altimeter setting, increase S-ILS 30 all Cats visibility to ¾ SM. VDP NA when using Atlanta Rgnl Falcon Fld altimeter setting.	MALSRS 	MISSED APPROACH: Climb to 1500 then climbing left turn to 3000 direct YATES LOM and hold, continue climb-in-hold to 3000.
AWOS-3 133.975	ATLANTA APP CON ★ 124.2 279.6	UNICOM 122.8 (CTAF)



ELEV 798	TDZE 796
MIRL Rwy 12-30	
FAF to MAP 4 NM	
Knots	60 90 120 150 180
Min:Sec	4:00 2:40 2:00 1:36 1:20
CATEGORY	A B C D
S-ILS 30	996-1/2 200 (200-1/2)
S-LOC 30	1160-1/2 364 (400-1/2) 1160-3/8 364 (400-3/8) 1160-3/4 364 (400-3/4)
CIRCLING	1300-1 502 (600-1) 1300-1 1/2 502 (600-1 1/2) 1640-2 3/4 842 (900-2 3/4)

SE-4, 09 SEP 2021 to 07 OCT 2021

SE-4, 09 SEP 2021 to 07 OCT 2021