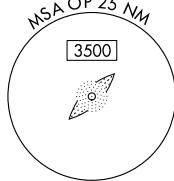
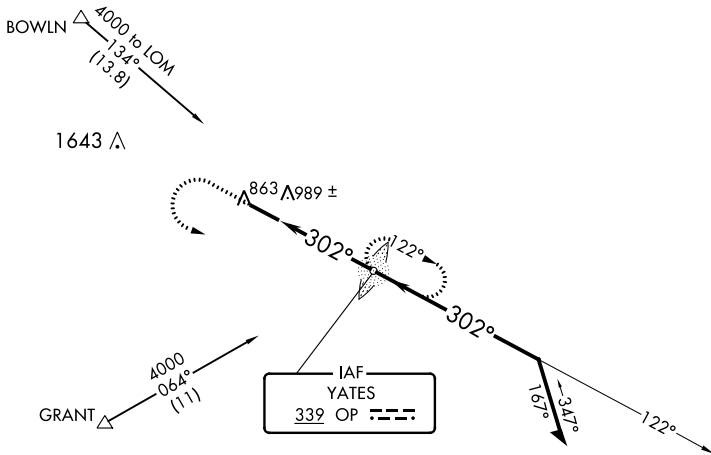


NDB OP 339	APP CRS 302°	Rwy Idg TDZE Apt Elev	4962 796 798
----------------------	------------------------	-----------------------------	---

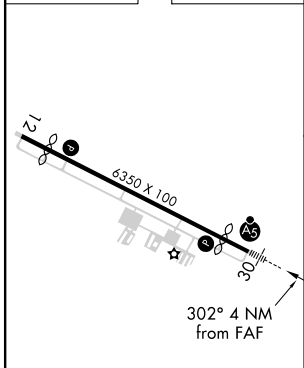
NDB RWY 30
THOMASTON-UPSON COUNTY (OPN)

<p>When local altimeter setting not received, use Atlanta Rgnl Falcon Fld altimeter setting and increase all MDAs 80 feet and S-30 Cats C/D and Circling Cat D visibility ¼ SM.</p>	<p>MALS R</p>	<p>MISSED APPROACH: Climb to 1500 then climbing left turn to 3000 direct YATES LOM and hold.</p>
---	---------------	--

AWOS-3 133.975	ATLANTA APP CON ★ 124.2 279.6	UNICOM 122.8 (CTAF) 0
--------------------------	---	---------------------------------



ELEV 798	TDZE 796
----------	----------



1500	3000	OP		<p>Remain within 10 NM</p>
↑	↶			
		OP LOM	122°	2400
<p>3.20° TCH 40</p>		2200	302°	<p>VGSi and descent angles not coincident (VGSi Angle 3.00/TCH 27).</p>
4 NM				

MIRL Rwy 12-30 0

FAF to MAP 4 NM					
Knots	60	90	120	150	180
Min:Sec	4:00	2:40	2:00	1:36	1:20

CATEGORY	A	B	C	D
S-30	1300-¾ 504 (600-¾)		1300-1 504 (600-1)	1300-1¼ 504 (600-1¼)
CIRCLING	1300-1 502 (600-1)		1300-1½ 502 (600-1½)	1640-2¾ 842 (900-2¾)

SE-4, 09 SEP 2021 to 07 OCT 2021

SE-4, 09 SEP 2021 to 07 OCT 2021