

WAAS CH <b>63115</b> <b>W12A</b>	APP CRS <b>121°</b>	Rwy ldg <b>5525</b> TDZE <b>791</b> Apt Elev <b>798</b>
--	------------------------	---

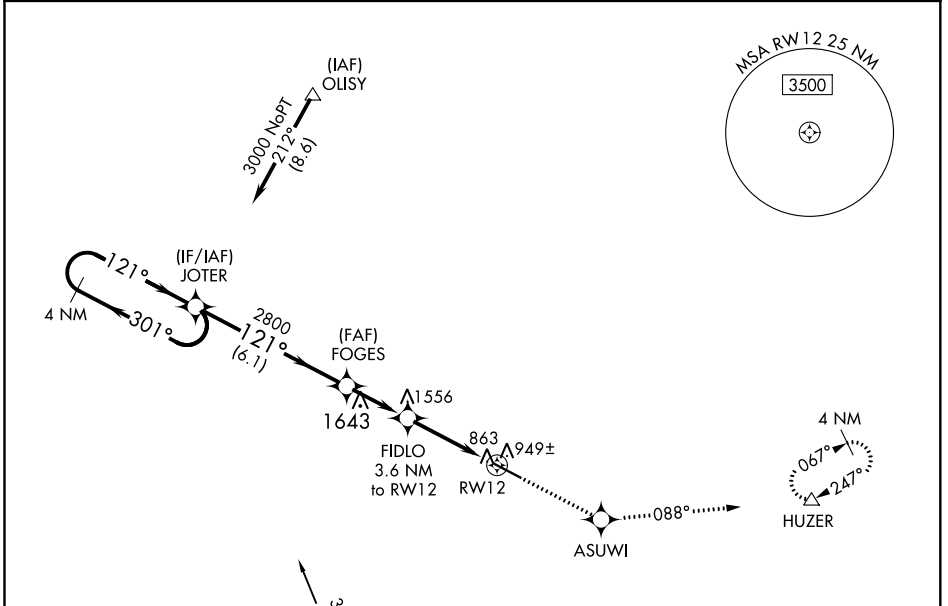
# RNAV (GPS) RWY 12

THOMASTON-UPSON COUNTY (OPN)

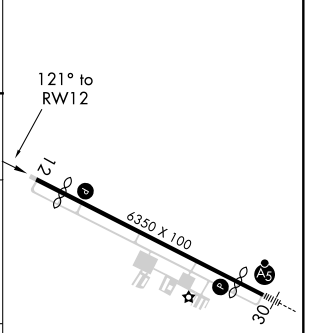
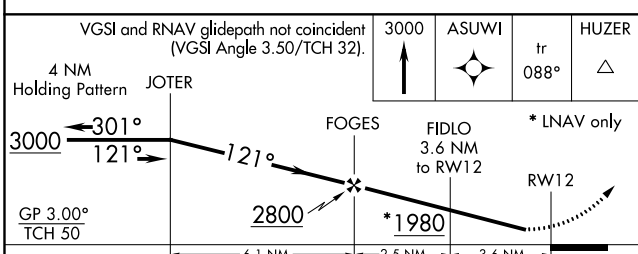
**⚠** DME/DME RNP-0.3 NA. Visibility reduction by helicopters NA. When local altimeter setting not received, use Atlanta Rgnl Falcon Fld altimeter setting and increase LPV DA to 1131 feet and all Cats visibility ¼ SM; increase all MDAs 80 feet and LNAV Cat D and Circling Cat D visibility ¼ SM.

**MISSED APPROACH:** Climb to 3000 direct ASUWI and via track 088° to HUZER and hold.

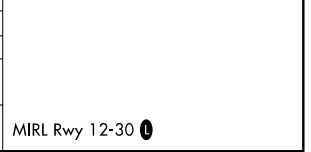
AWOS-3 <b>133.975</b>	ATLANTA APP CON ★ <b>124.2 279.6</b>	UNICOM <b>122.8 (CTAF)</b>
--------------------------	---	-------------------------------



ELEV 798	TDZE 791
----------	----------



CATEGORY	A	B	C	D
LPV DA	1063-1		272 (300-1)	
LNAV MDA	1200-1 409 (500-1)		1200-1¼ 409 (500-1¼)	
CIRCLING	1300-1 502 (600-1)		1300-1½ 502 (600-1½) 1640-2¾ 842 (900-2¾)	



SE-4, 09 SEP 2021 to 07 OCT 2021

SE-4, 09 SEP 2021 to 07 OCT 2021