

WAAS CH 58215 W30A	APP CRS 301°	Rwy Idg TDZE Apt Elev	4962 796 798
--	------------------------	-----------------------------	---

RNAV (GPS) RWY 30

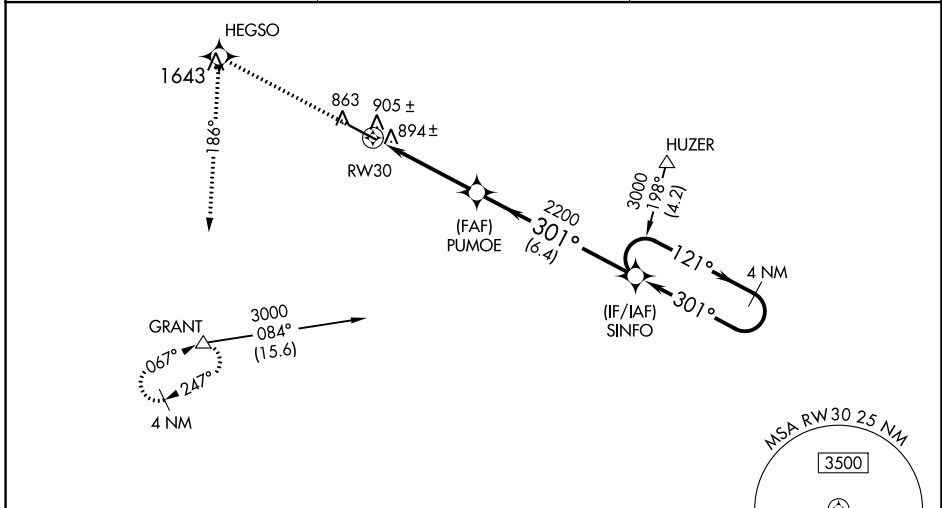
THOMASTON-UPSON COUNTY (OPN)

⚠ For uncompensated Baro-VNAV systems, LNAV/VNAV NA below -16°C (4°F) or above 47°C (116°F). DME/DME RNP-0.3 NA. VDP and Baro-VNAV NA when using Atlanta Rgnl Falcon Fld altimeter setting. When local altimeter setting not received, use Atlanta Rgnl Falcon Fld altimeter setting and increase LPV DA to 1064 feet and LNAV/VNAV DA to 1259 feet and LNAV/VNAV all Cats visibility ½ SM; increase all MDAs 80 feet and LNAV Cat C and Circling Cat D visibility ½ SM. For inoperative MALSR, increase LNAV Cat D visibility ½ mile. For inoperative MALSR, when using Atlanta Rgnl Falcon Fld altimeter setting; increase LPV visibility ½ mile all Cats.

MALSR

MISSED APPROACH: Climb to 3000 direct HEGSO and climbing left turn via track 186° to GRANT and hold.

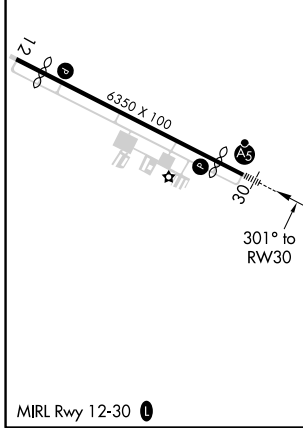
AWOS-3 133.975	ATLANTA APP CON ★ 124.2 279.6	UNICOM 122.8 (CTAF)
--------------------------	---	-------------------------------



SE-4, 09 SEP 2021 to 07 OCT 2021

SE-4, 09 SEP 2021 to 07 OCT 2021

ELEV 798	TDZE 796
----------	----------



3000 HEGSO (↑) GRANT (△) VGSi and RNAV glidepath not coincident (VGSi Angle 3.00/TCH 27). 4 NM Holding Pattern

*LNAV only *1.3 NM to RW30 PUMOE SINFO 301° 121° 3000

GP 3.00° TCH 51

CATEGORY	A	B	C	D
LPV DA	996-½		200 (200-½)	
LNAV/VNAV DA	1191-¾		395 (400-¾)	
LNAV MDA	1240-½	444 (500-½)	1240-¾ 444 (500-¾)	1240-1 444 (500-1)
CIRCLING	1300-1	502 (600-1)	1300-1½ 502 (600-1½)	1640-2¾ 842 (900-2¾)